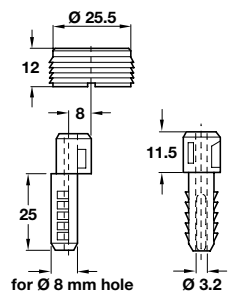
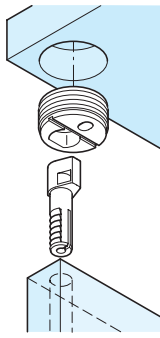


Calculation of drilling distances
Dim A = dim B - dim C + 8 mm
Dim C = max. 9 mm



A Recessed connecting fitting

- With dowel plug for $\varnothing 8$ mm hole
- Cranked type
- Dowel with moulded plastic stub and steel spreader pin
- Plastic housing with metal locking screw

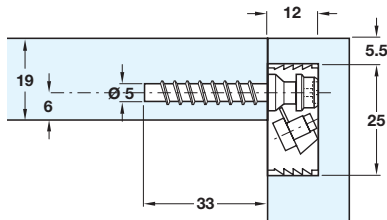
Finish	Cat. No.
Brown	262.30.133

Order qty: Multiples of 100 pcs

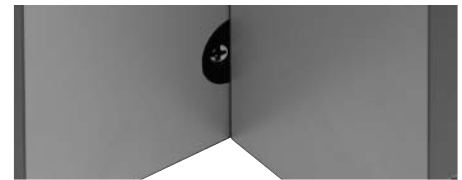
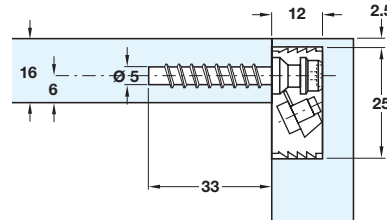
5

Connecting Fittings

Recommended drilling for 19 mm board thickness



Recommended drilling for 16 mm board thickness

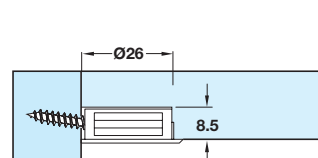
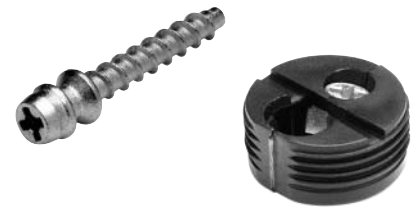
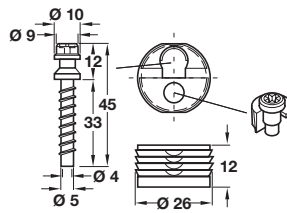


B DC-25 cabinet connectors

- Consists of:
 1x housing for $\varnothing 25$ mm hole
 1x bolt
- Plastic housing, zinc alloy bolt

Finish	Cat. No.
White	261.95.700
Brown	261.95.100

Order qty: Multiples of 100 sets

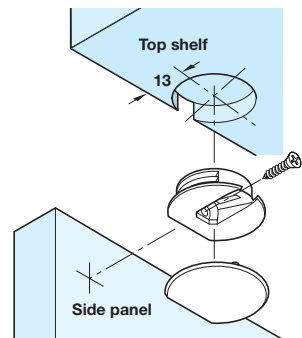
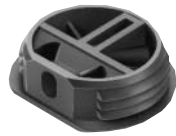
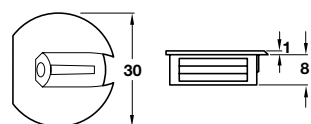


C Recessed connecting fitting

- For light structures
- Press fit in housing recess $\varnothing 26$ mm
- Plastic

Finish	Cat. No.
Beige	262.43.489

Order qty: Multiples of 100 pcs

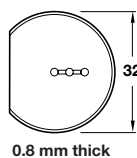


D Cover cap

- For connecting fitting **C**
- Plastic

Colour	Cat. No.
White	262.43.710
Beige	262.43.416

Order qty: Multiples of 100 pcs



TCH-FF 2010, HUK. Dimensional data not binding. We reserve the right to alter specifications without notice.