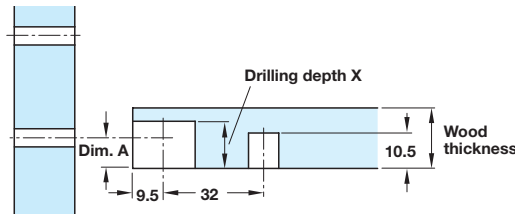
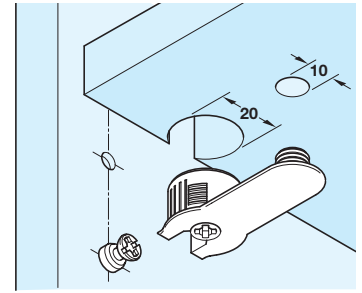


- **Rafix 32 housings**, zinc alloy or plastic
- For Ø 7 mm connecting bolts, shown on pages **30-33**
- For wood thicknesses from 16 and 19 mm
- Available with or without ridge
- **Rafix housings, standard and flush fitting** are shown on page **28**
- **Rafix TAB housings** are shown on page **30**
- **Rafix SH 30 housings** and **bolts** are shown on page **34**



Drilling depth X = depending on housing type and wood thickness (see ordering table)

Dimension A = 1/2 wood thickness (see ordering table)



Without ridge:
 The horizontal panel can be installed end-on or from above

With ridge:
 The horizontal panel can only be installed from above and the cabinet elements are pre-assembled

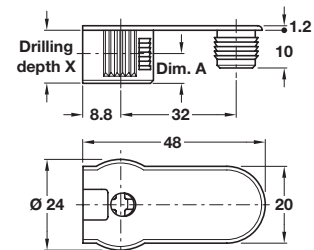
Refer to page **26** for further information on 'with ridge' and 'without ridge'.

A Rafix-SE 32 housing

- **Zinc alloy** housing with zinc alloy tightening element
- For wood thickness from 16 or 19 mm

For wood thickness from	Dim. A	Drilling depth X	Cat. No.	
			Nickel-plated	Bronze
Without ridge				
16 mm	8.0 mm	12.7 ^{+0.3} mm	263.13.703	263.13.103
19 mm	9.5 mm	14.2 ^{+0.3} mm	263.13.705	-
With ridge				
16 mm	8.0 mm	12.7 ^{+0.3} mm	263.17.703	-
19 mm	9.5 mm	14.2 ^{+0.3} mm	263.17.705	-

Order qty: Multiples of 100 pcs

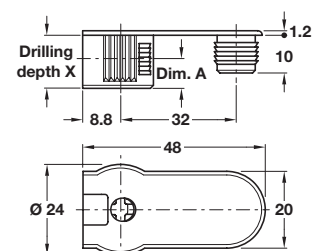


B Rafix-SE 32 housing

- **Plastic** housing with zinc alloy tightening element
- For wood thickness from 16 or 19 mm

For wood thickness from	Dim. A	Drilling depth X	Cat. No.			
			White aluminium	White	Silver coloured	Black
Without ridge						
16 mm	8.0 mm	12.7 ^{+0.3} mm	-	263.12.703	263.12.203	263.12.303
19 mm	9.5 mm	14.2 ^{+0.3} mm	263.12.205	263.12.705	-	263.12.305
With ridge						
16 mm	8.0 mm	12.7 ^{+0.3} mm	-	263.16.703	-	-
19 mm	9.5 mm	14.2 ^{+0.3} mm	-	263.16.705	-	-

Order qty: Multiples of 100 pcs



TCH-FF 2010, HUK. Dimensional data not binding. We reserve the right to alter specifications without notice.