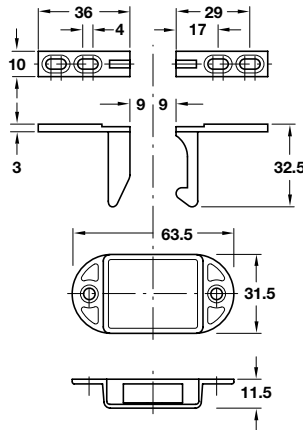


A Automatic door catch

- Locks double panel doors without additional stop strips or furniture bolts
- Door catch mounted inside the cabinet, hook and wedge element mounted to inside of either right or left door
- Use automatic door catch in conjunction with concealed cup hinges
- Zinc alloy

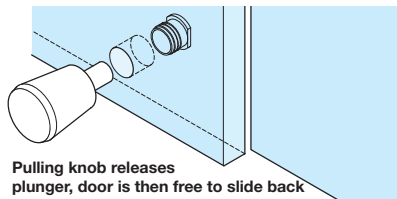


Finish	Cat. No.
Nickel-plated	245.58.754
Bronzed	245.58.156

Order qty: 1 pc

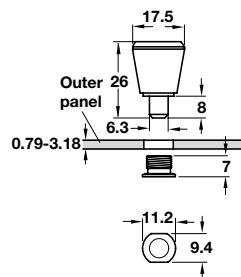
5

Catches, Latches and Bolts



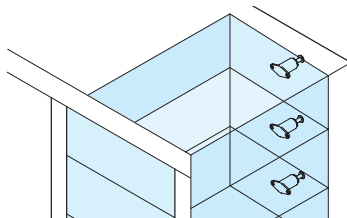
B Spring loaded plunger

- Holds against lateral motion
- Provides quick release of sliding parts
- Without hold-open feature
- Aluminium and steel



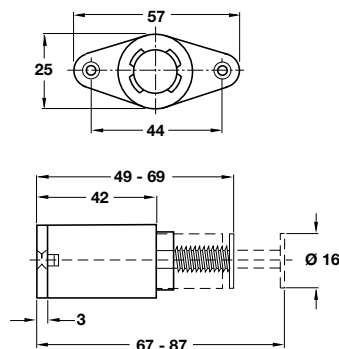
	Cat. No.
Spring loaded plunger	229.12.900

Order qty: 1 pc



C Flexa-Touch drawer latch

- Sprung, requires no additional handles or knobs for the drawer front
- A simple touch of the finger releases the spring and opens the drawer automatically
- The knob has 20 mm adjustment for perfect alignment of the drawers
- Fixing screws included
- Beige plastic



	Cat. No.
Flexa-Touch drawer latch	245.52.403

Order qty: 1 pc

TCH-FF 2010, HUK. Dimensional data not binding. We reserve the right to alter specifications without notice.