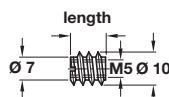


A Screw-in sleeve, M5 internal thread

- With SW5 hexagonal socket head and rim
- Steel

Length	Outer Ø	Core Ø	Cat. No.
12 mm	10 mm	8 mm	030.07.053

Order qty: Multiples of 100 pcs

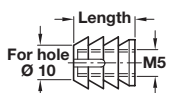


B Screw in sleeve, M5 internal thread

- For Ø 7 mm hole
- With screwdriver slot
- Bright steel

Length	Outer Ø	Core Ø	Cat. No.
10 mm	10 mm	7 mm	030.00.208

Order qty: Multiples of 100 pcs

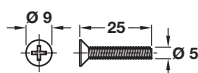


C Glue in sleeve, M5 internal thread

- For Ø 10 mm hole
- With grooves for glue
- Plastic

Length	Outer Ø	Cat. No.
13 mm	11 mm	039.33.051

Order qty: Multiples of 100 pcs

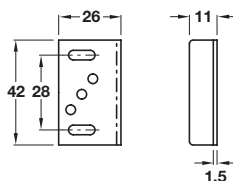


D Countersunk screw, M5 x 25 mm

- Steel

Finish	Cat. No.
Zinc-plated	910.50.925

Order qty: 1 pc



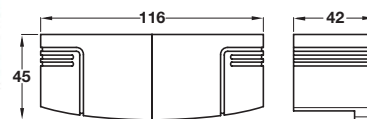
E Striking plate

- Screw fixing
- Steel



Finish	Cat. No.
Nickel-plated	239.47.604

Order qty: Multiples of 10 pcs



F Maintenance tool

- Attach tool to lock box to unlock battery hold and change batteries
- Charcoal plastic

	Cat. No.
Maintenance tool	231.80.100

Order qty: 1 pc



G AA battery

- Alkaline manganese, 1.5 Volt type E91
- 4 pcs required for 1 Diallock LockerLock
- Batteries will require changing after approx. 10,000 locking cycles
- If battery is flat the LockerLock will not lock

Batteries can only be changed with special maintenance tool item F

	Cat. No.
AA battery	910.54.980

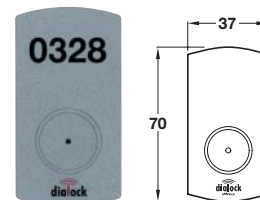
Order qty: Multiples of 4 pcs

H Battery low key card

- Using Tag-it™ ISO technology
- Resets battery control after battery change - the push button of the Diallock LockerLock is pushed by the card, both LEDs flash briefly and the LockerLock is back in operating mode
- Card in ISO format

	Cat. No.
Battery low key card	917.42.028

Order qty: 1 pc

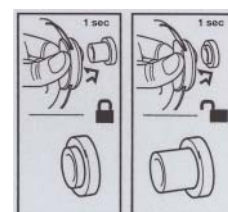


I Self-adhesive number plate

- To identify lockers when LockerLock is used
- Self-adhesive silver-coloured plastic
- Drill hole: Ø 22 mm
- **Note:** When ordering number plates with numbers please specify the required number (4 digits) for the label

Number plate	Cat. No.
Neutral (without number)	231.81.100
With number	231.81.000

Order qty: 1 pc



J LockerLock instruction sheet

- 65 x 68 mm
- Self-adhesive plastic foil

Finish	Cat. No.
Silver coloured foil	231.81.200
Transparent foil	231.81.300

Order qty: 1 pc