

- **Dialock keys** for use with all Diallock terminals with Tag-it™ processors
- Contactless data transmission
- Read/write transponder, using Tag-it™ ISO technology
- No batteries required

- Insensitive to magnetism, mechanical vibrations, humidity, moisture, dust
- Reusable
- Forgery proof
- Temperature range: -35 to +50°C
- Data storage => 10 years

A Diallock key card

- 54 x 85 mm (bank card size to ISO 7810)
- For use with all Diallock terminals with Tag-it™ processor
- User key card - 4 locking authorisations per key card possible
- Can be printed on using most dye film printers
- Plastic

Finish	Cat. No.
White	917.44.011

Order qty: 1 pc

B Diallock key tag

- 43 x 34 x 5 mm, for attaching to key ring
- For use with all Diallock terminals with Tag-it™ processor
- User key - 4 locking authorisations per key tag possible
- Plastic

Finish	Cat. No.
Red	917.44.099
Blue	917.44.098

Order qty: 1 pc

C Diallock key with wristband

- 41 x 34 x 4.5 mm (excluding wristband)
- For use with all terminals with Tag-it™ processor, in particular LockerLock
- User key - 1 locking authorisation per key possible
- Polyamide, black with white insert

Wristband colour	Cat. No.
Red	917.44.209
Blue	917.44.208

Order qty: 1 pc

D Diallock key tag KT

- Ø 36 mm x 7.2 mm, for attaching to key ring
- For use with all Diallock terminals with Tag-it™ processor
- User key - 4 locking authorisations per key tag possible
- Polycarbonite with stainless steel edging

Colour	Cat. No.
White	917.44.107
Black	917.44.103
Grey	917.44.105
Red	917.44.109
Blue	917.44.108
Orange	917.44.101

Order qty: 1 pc

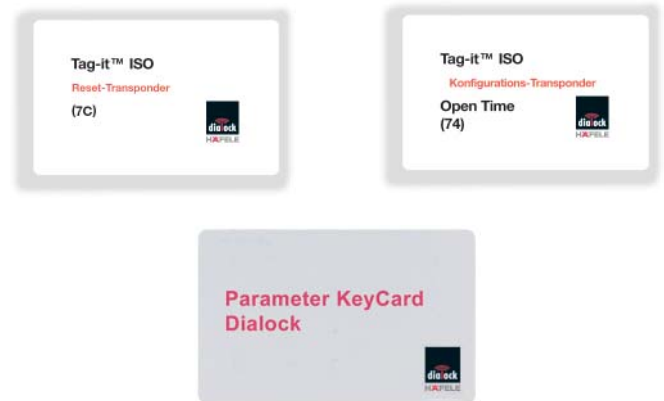


E Programming key cards

- 54 x 85 mm (bank card size to ISO 7810)
- For use with EPC reader knob module with Tag-it™ processor
- Programming card - for granting access authorisation to electronic keys
- Clearing card - for withdrawing access authorisation to electronic keys
- White plastic

Key card	Cat. No.
Programming card	917.42.001
Clearing card	917.42.002

Order qty: 1 pc



F Reset, Open Time and Parameter key cards

- 54 x 85 mm (bank card size to ISO 7810)
- For use with all Diallock terminals with Tag-it™ ISO processor
- **Reset key card:** Carries out a reset when used with programming key card
- **Open Time key card:** Changes the opening period of the Diallock lock to up to 120 seconds (standard setting 3 seconds)
- **Parameter key card:** For transferring configuration parameters from the programming station to the Diallock terminal
- **Note:** Special Diallock applications must be programmed by an approved Diallock installer
- White plastic

Key card	Cat. No.
Reset	917.42.027
Open time	917.42.021
Parameter	917.42.029

Order qty: 1 pc