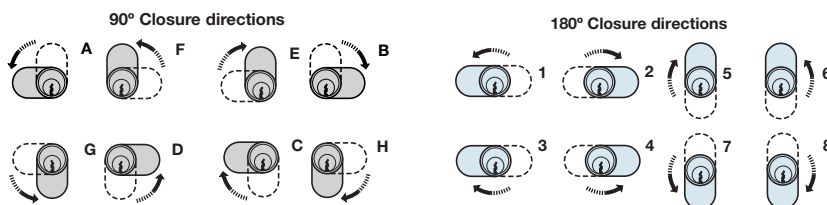


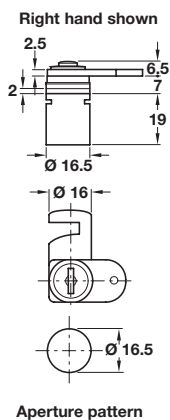
# Locks

## Cam Locks for Wooden and Metal Furniture

- **90° and 180° Closure directions**
- **Closure directions** can be altered by re-positioning the cam, but always moving in the same direction:
  - Closure direction **A** can be altered to **D, F** or **G**
  - Closure direction **B** can be altered to **C, E** or **H**
  - Closure direction **1** can be altered to **2 - 8**



### For wooden furniture

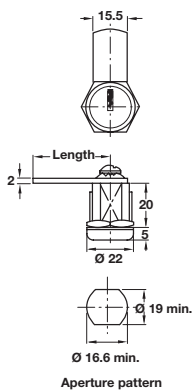


#### A Cam lock

- With **straight cam**
- Closure travel **180°**
- **Without key trap**; key can be removed in locked and unlocked position
- **5 plate levers** = 200 possible key changes
- Zinc-plated steel cam
- Nickel-plated zinc alloy cylinder
- **Accessories:** 2x keys and 1x locking cam

Random key changes	
Closure direction	8
Handed	180° <b>5-8</b>
Left hand	235.02.710
Right hand	235.02.720

Order qty: 1 pc



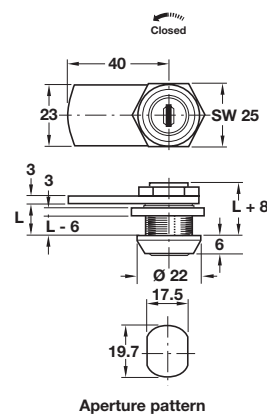
#### B Cam lock

- With **straight cam** (two lengths) and nut attachment
- Closure travel **180°**
- **Without key trap**; key can be removed in locked and unlocked position
- **5 pairs of pin tumblers** = 200 possible key changes
- Pressed steel nuts and cam
- Polished chrome-plated cylinder
- **Accessories:** 2x keys

Random key changes	
Closure direction	8
Length	180° <b>8 (1-7)</b>
30 mm	235.99.201
54 mm	235.99.202

Order qty: 1 pc

### For metal furniture



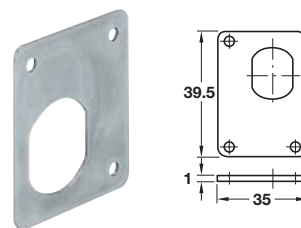
#### C Cylinder cam lock

- With **straight cam** and nut attachment
- Closure travel **90° or 180°**
- 90° **with key trap**; key can only be removed in locked position
- 180° **without key trap**; key can be removed in locked and unlocked position
- **5 plate levers** = 200 possible key changes
- Galvanized steel nuts and cam
- Polished chrome-plated zinc alloy cylinder
- **Accessories:** 2x keys, 1x locking cam and 2x nuts

Random key changes			
Closure direction	A	B	
Length L	90° <b>A(D,F,G)</b>	90° <b>B(C,E,H)</b>	180° <b>1(2-8)</b>
13.0 mm	235.73.211	235.73.220	235.73.202
26.0 mm	-	-	235.74.209
32.5 mm	-	-	235.75.206

Keyed alike: Key change FH1			
Closure direction	A	B	
Length L	90° <b>A(D,F,G)</b>	90° <b>B(C,E,H)</b>	180° <b>1(2-8)</b>
13.0 mm	235.73.266	235.73.275	235.73.257
26.0 mm	-	-	235.74.254
32.5 mm	-	-	235.75.251

Order qty: Multiples of 10 pcs



#### D Locking plate

- For cam locks with aperture pattern 19.7 x 17.5 mm
- Steel

Finish	Cat. No.
Galvanized	235.73.908

Order qty: Multiples of 10 pcs

TCH-FF 2010, HUK. Dimensional data not binding. We reserve the right to alter specifications without notice.