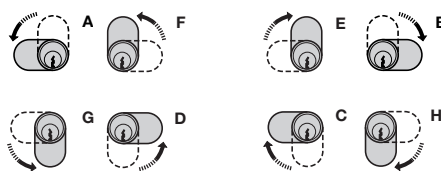
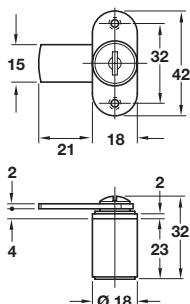


- ***90° Closure direction:**
- **Closure directions** can be altered by re-positioning the cam, but always moving in the same direction:
 Closure direction **A** can be altered to **D, F** or **G**
 Closure direction **B** can be altered to **C, E** or **H**



Right hand, direction A version shown

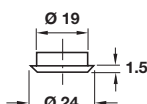


A Cylinder cam lock without key trap

- With **Ø 18 mm** cylinder
- For vertical mounting
- Closure travel **90°**
- **Without key trap;** key can be removed in open or locked position
- **5 plate levers** = 200 possible key changes
- Matt nickel-plated zinc alloy mounting plate and cylinder
- Galvanized steel lever
- **Accessories:** 2x keys, 1x locking lever
- **Cylinder rosette** must be ordered separately

Random key changes		
Closure direction	A	B
	90° A (D,F,G)	90° B (C,E,H)
Cat. No.	235.04.609	235.04.654
Keyed alike		
Closure direction	A	B
	90° A (D,F,G)	90° B (C,E,H)
Key change FH1	235.04.814	235.04.912
Key change FH2	235.04.823	235.04.921
Key change FH3	235.04.832	235.04.930
Key change FH4	235.04.841	235.04.949
Key change FH5	235.04.850	235.04.958

Order qty: 1 pc



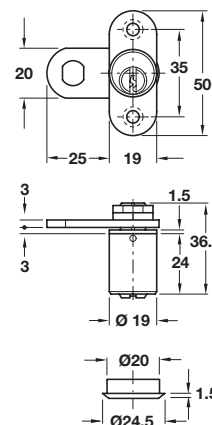
B Cylinder rosette

- For use with **Ø 18 mm** cylinders
- Steel

Finish	Cat. No.
Matt nickel-plated	219.19.676

Order qty: Multiples of 100 pcs

Right hand, direction A version shown



C Cylinder cam lock with key trap

- With **Ø 19 mm** cylinder
- For vertical mounting
- Closure travel **90°**
- **With key trap;** key can only be removed in locked position
- **5 pairs of pin tumblers** = 10,000 possible key changes
- Galvanized steel locking lever and securing nuts
- Matt nickel-plated zinc alloy mounting plate
- Matt nickel-plated brass cylinder
- **Accessories:** 2x keys, 1x cylinder rosette, 1x locking lever and 2x securing nuts
- ***Master key and general master key systems:** Please discuss with our sales staff before ordering, state closure direction required

Random key changes		
Closure direction	A	B
	90° A (D,F,G)	90° B (C,E,H)
Cat. No.	235.03.602	235.03.657
Keyed alike: Key change H1		
Closure direction	A	B
	90° A (D,F,G)	90° B (C,E,H)
Cat. No.	235.03.817	235.03.915

Order qty: 1 pc

With master key system:*	
Cat. No.	235.03.698
With general master key system:*	
Cat. No.	235.03.699

TCH-FF 2010, HUK. Dimensional data not binding. We reserve the right to alter specifications without notice.