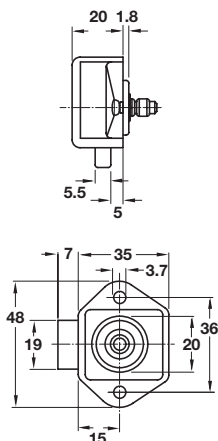


5

Locks

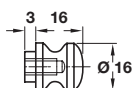


**A Mini Push-Lock case**

- Backset: **15 mm**
- Suitable for **16 mm** board thickness
- Unhanded
- Can be used to complement range shown on pages **145-147**
- Closes almost flush to the front of the door
- Plastic lock case with metal mechanism
- Order **knob** and **rosette** separately

Finish	Cat. No.
Brown	211.61.106
White	211.61.704
Matt nickel	211.61.606

Order qty: 1 pc

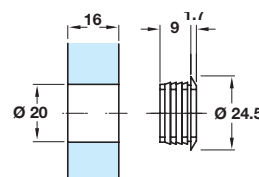


**B Mini Push-Lock knob**

- Plastic
- Order **lock case** and **rosette** separately

Finish	Cat. No.
Dark grey	229.06.510
Matt brass	229.07.508
Polished brass	229.07.802
Matt nickel	229.07.606
Polished chrome	229.01.211

Order qty: 1 pc



**C Mini Push-Lock rosette**

- Plastic
- Order **lock case** and **knob** separately

Finish	Cat. No.
Dark grey	229.08.514
Matt brass	229.09.502
Polished brass	229.09.806
Matt nickel	229.09.600
Polished chrome	229.03.241

Order qty: 1 pc

TCH-FF 2010, HUK. Dimensional data not binding. We reserve the right to alter specifications without notice.