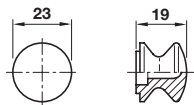
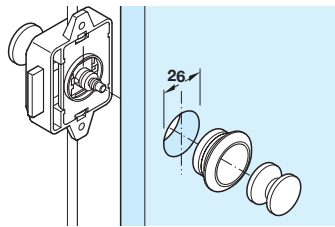


Push-Lock knobs and rosettes can be purchased to suit particular door thicknesses

If a rim lock with two spindles is used, for opening the door from both sides, order 2 knobs and 1 rosette

With a two spindle lock, the push knob on the front of the door closes almost flush to the door but a knob used at the back of the lock, on the second spindle, never closes flush to the lock case or door

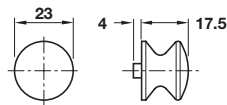


A Push-Lock knob

- For 13, 16 and 19 mm door thicknesses
- Plastic
- Order rosette separately

Finish	Cat. No.
Matt nickel	229.01.677
Polished brass	229.01.873
Brown	229.00.198

Order qty: 1 pc

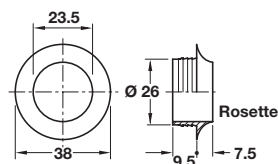


B Push-Lock knob

- For 22 and 25 mm door thicknesses
- Plastic
- Order rosette separately

Finish	Cat. No.
Matt nickel	229.01.690
Polished brass	229.01.890

Order qty: 1 pc

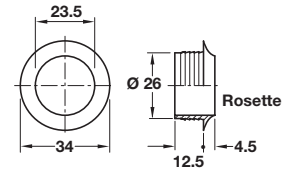


C Push-Lock rosette

- For 13 mm door thickness when used with 19 mm Push-Lock knob A
- Plastic

Finish	Cat. No.
Matt nickel	229.03.608
Polished brass	229.03.804

Order qty: 10 pcs

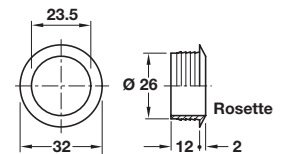


D Push-Lock rosette

- For 16 mm door thickness when used with 19 mm Push-Lock knob A
- For 22 mm door thickness when used with 25 mm Push-Lock knob B
- Plastic

Finish	Cat. No.
Matt nickel	229.03.617
Polished brass	229.03.813
Brown	229.02.110

Order qty: 1 pc

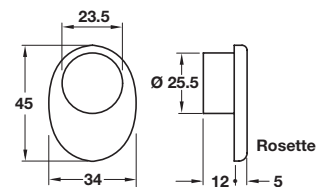


E Push-Lock rosette

- For 19 mm door thickness when used with 19 mm Push-Lock knob A
- For 25 mm door thickness when used with 25 mm Push-Lock knob B
- Plastic

Finish	Cat. No.
Matt nickel	229.03.626
Polished brass	229.03.822
Brown	229.02.129

Order qty: 1 pc



F Push-Lock rosette

- For 19 mm door thickness when used with 19 mm Push-Lock knob A
- For 25 mm door thickness when used with 25 mm Push-Lock knob B
- Plastic

Finish	Cat. No.
Matt nickel	229.03.632

Order qty: 1 pc