

A Symo 3000 glass door cylinder lock with rack

- For glass panels from **4-7 mm**
- For on-site installation of cylinder cores
- Zinc alloy housing
- Stainless steel rack

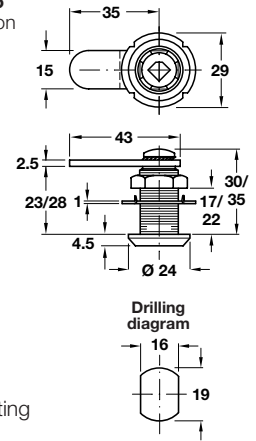
Housing finish	Cat. No.
Matt nickel-plated	233.44.600

Order qty: 20 pcs

The locks can be operated by turning the protective cap with a screwdriver or coin, before the cylinder cores are installed



Refer to page 125 for closure direction guide



C Cam lock case

- For on-site installation of cylinder cores
- With **straight cam**
- Closure travel 90°, convertible
- Zinc alloy
- **Accessories:** 1x locking cam, 1x mounting screw, 1x nut and 1x steel lock washer

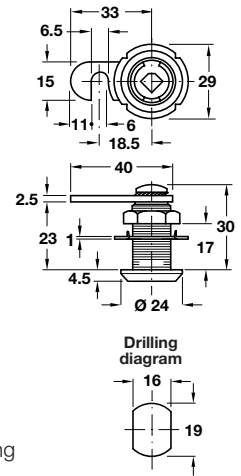
Maximum thread 17 mm	Cat. No.	
Closure direction	A (D, F, G*)	B (C, E, F*)
Polished nickel-plated	235.88.600	235.88.610

Order qty: 1 pc

Maximum thread 22 mm	Cat. No.	
Closure direction	A (D, F, G*)	B (C, E, F*)
Polished nickel-plated	235.88.620	235.88.630

Order qty: 1 pc

Refer to page 125 for closure direction guide

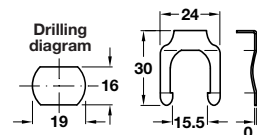


D Cam lock case

- For on-site installation of cylinder cores
- With **hook cam**
- Closure travel 90°, convertible*
- Zinc alloy
- **Accessories:** 1x locking cam, 1x mounting screw, 1x nut and 1x steel lock washer

Closure direction	A (D, F, G*)	B (C, E, F*)
Polished nickel-plated	235.88.720	235.88.730

Order qty: 1 pc



E Cam lock clip

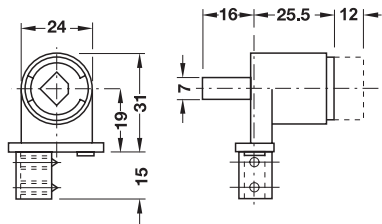
- For sheet metal thickness of **0.8-1.5 mm**
- For use when mounting cam locks into metal doors
- Steel

Finish	Cat. No.
Nickel-plated	235.88.990

Order qty: 1 pc

5

Locks



B Symo 3000 sliding door lock case

- For two door cabinets using the Labora sliding glass door system, for sliding into and tightening in runner housing profile
- For on-site installation of cylinder cores
- Zinc alloy

For glass thickness 4-6 mm	Cat. No.	
Closure direction	Left hand	Right hand
Polished nickel-plated	233.55.600	233.55.601

Order qty: 1 pc

For glass thickness 6-8 mm	Cat. No.	
Closure direction	Left hand	Right hand
Polished nickel-plated	233.55.610	233.55.611

Order qty: 1 pc

TCH-FF 2010, HUK. Dimensional data not binding. We reserve the right to alter specifications without notice.