

Brackets

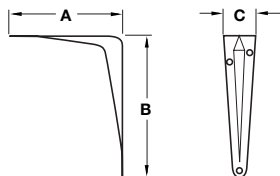
Fixed Brackets

*Load carrying capacity shown is ensured when the long arm is mounted on the wall.

Maximum distance between brackets 800 mm.

Wall mounting must accommodate the load capacity.

The properties and materials of the shelves and walls as well as of the mounting material must conform to each other.



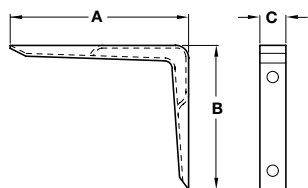
A Fixed bracket

- Screw fixing
- White enamelled steel



Dimensions			Screw hole	Load capacity* kg/pair	Cat. No.
A	B	C			
200 mm	250 mm	42 mm	Ø 4.0 mm	50 kg	287.30.164
250 mm	300 mm	46 mm	Ø 4.0 mm	60 kg	287.30.173
300 mm	350 mm	47 mm	Ø 5.0 mm	70 kg	287.30.182

Order qty: 1 pc



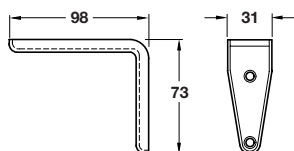
B Fixed shelf bracket

- Screw fixing
- White epoxy-coated profiled, reinforced steel



Dimensions			Load capacity kg/pc	Cat. No.
A	B	C		
150 mm	120 mm	20 mm	18 kg	287.33.735
200 mm	150 mm	25 mm	20 kg	287.33.744
250 mm	200 mm	29 mm	27 kg	287.33.753

Order qty: 1 pc



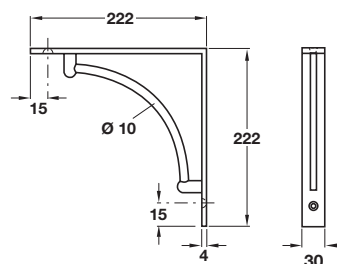
C Fixed shelf bracket

- Screw fixing
- Epoxy-coated profiled, reinforced steel



Finish	Load capacity kg/pc	Cat. No.
White	18 kg	287.33.726

Order qty: 1 pc

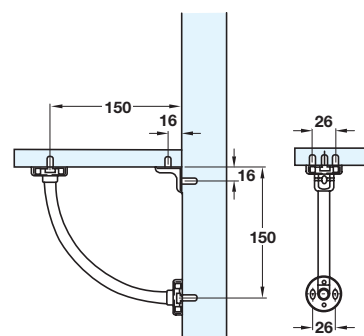


D Fixed shelf bracket

- Fixing materials included
- Steel

Bracket/support	Cat. No.
Polished chrome/polished chrome	287.73.220
Matt chrome/matt chrome	287.73.820

Order qty: 1 pc



E Shelf bracket

- Load capacity: 70 kg/m²
- Can be used above or below shelf
- With depth and height adjustment - use elongated holes
- Fixing materials and chrome plated nylon cover caps included
- Steel

Finish	Cat. No.
Matt chrome-plated	287.72.200

Order qty: 1 pc