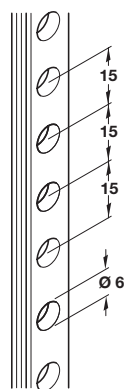
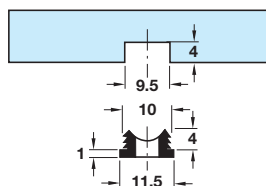
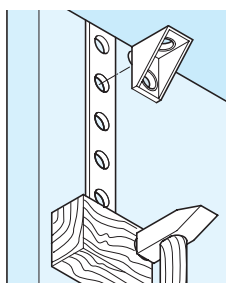


Please note:

Shelf support strip A is priced and sold in metres
Please order in multiples of metre quantity shown
2.5 metres = 1 length

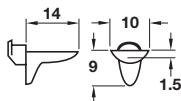


A Shelf support strip

- Knocks into groove
- Mounting apertures at 15 mm intervals
- Choice of shelf supports **B, C or D**
- Plastic

Finish	Cat. No.
White	283.45.708

Order qty: Multiples of **2.5 meters**

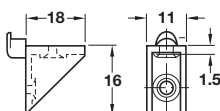
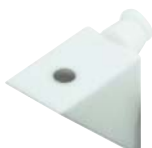


B Shelf support

- For use with shelf support strip **A**
- Plastic

Finish	Cat. No.
White	283.49.706

Order qty: Multiples of 100 pcs

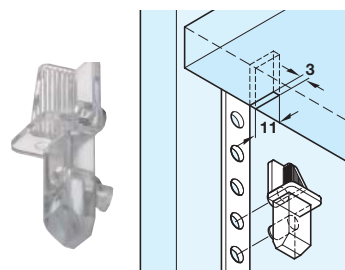


C Shelf support

- For use with shelf support strip **A**
- Plastic

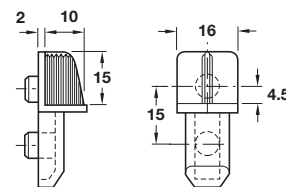
Finish	Cat. No.
White	283.47.702

Order qty: Multiples of 100 pcs



D Shelf support

- Special registered design
- For use with support strip **A**
- Shelves are grooved to prevent the shelf tilting
- Plastic

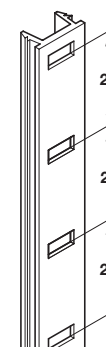
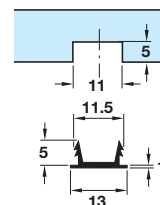
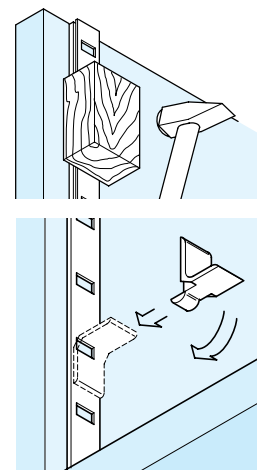


Finish	Cat. No.
Transparent	700.19.402

Order qty: Multiples of 20 pcs

Please note:

Shelf support strip **E** is priced and sold in metres
Please order in multiples of metre quantity shown
3.5 metres = 1 length

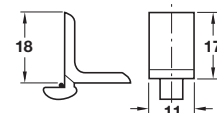


E Shelf support strip

- Knocks into groove
- Mounting apertures at 25 mm intervals
- Aluminium

Finish	Cat. No.
Bright	283.12.003
Gold coloured anodised	283.12.807
Silver coloured anodised	283.12.905

Order qty: Multiples of **3.5 metres**



F Shelf support

- For use with shelf support strip **E**
- Aluminium

Finish	Cat. No.
Bright	283.68.005
Gold coloured anodised	283.68.809
Silver coloured anodised	283.68.907

Order qty: Multiples of 100 pcs