



Gravity flap wall grille, system 4, 5, 6

- Low resistance vent, ideal for axial bathroom fans for straight through wall fitting
- Will fit the same components as cowlled wall outlet
- UV stabilised material
- System 6 free-flow area: 7,140 mm²

Finish	System 4	System 5	System 6
White	565.30.830	565.30.833	565.30.835
Brown	565.30.130	565.30.133	565.30.135

Order qty: 1 pc



Airbrick adaptor, system 4a, 5a, 6a

- For use with System 4a, 5a, 6a
- 4a and 5a grille are standard house brick size
- 6a grille is 142 x 236 mm
- UV stabilised material

Finish	System 4a	System 5a	System 6a
White	565.30.838	565.30.836	565.30.839
Brown	565.30.138	565.30.136	565.30.139

Order qty: 1 pc

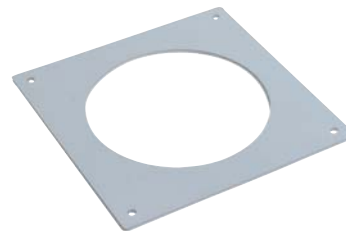


Adaptor for slimline airbrick wall outlet, system 6a

- For use with system 6a
- UV stabilised material

Finish	System 6a
White	565.30.837

Order qty: 1 pc



Flat round wall plate

- Provides a neat finish where an aperture has been formed for a round duct to exit through a wall
- Outer dimensions: System 4 version 152 x 152 mm, System 5 version 170 x 170 mm and System 6 version 200 x 200 mm
- Flame retardant white PVC

System	Cat. No.
System 4	565.30.881
System 5	565.30.883
System 6	565.30.885

Order qty: 1 pc



Flat rectangular wall plate

- Provides a neat finish where an aperture has been formed for a flat duct to exit through a wall
- Outer dimensions: System 4a version 153 x 153 mm, System 5a version 260 x 117 mm
- Flame retardant white material

System	Cat. No.
System 4a	565.30.840
System 5a	565.30.845

Order qty: 1 pc

TCH-FF 2010, HUK. Dimensional data not binding. We reserve the right to alter specifications without notice.