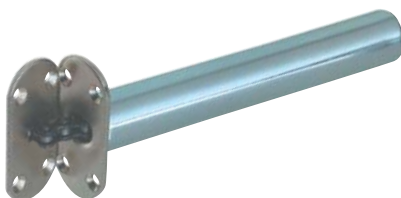


A Concealed jamb door closer

- 51 x 26 x 141 mm
- Tested in line with BS476, Part 22, 1987, suitable for 1/2 hour fire resisting doors
- Door stop to be used
- Rectangular plates
- Concealed fixing, fixings included
- Steel or brass

Finish	Cat. No.
Electro brassed	931.82.408
Nickel-plated	931.82.406

Order qty: 1 pc



B Concealed jamb door closer

- 60 x 26 x 142 mm
- Tested in line with BS476, Part 22, 1987, suitable for 1/2 hour fire resisting doors
- Door stop to be used
- Radius plates
- Concealed fixing, fixings included
- Steel

Finish	Cat. No.
Electro brassed	931.82.418
Nickel-plated	931.82.416

Order qty: 1 pc



C Concealed hydraulic jamb door closer

- 123 x 26 x 170 mm
- Suitable for doors up to 940 mm width and 80 kg
- Tested to 500,000 frequency
- One hour UK Fire Test WFRC No. C119402. 5 year guarantee
- Not suitable for external doors
- With adjustable speed and latch, hydraulic

Finish	Cat. No.
Satin chrome	931.83.402
Polished brass	931.83.408

Order qty: 1 pc



D Door selector

- Face fixing pattern. Not suitable for external use
- Enables a pair of rebated meeting stile doors to close in the correct sequence automatically
- Suitable for doors up to 1200 mm wide and any standard door thickness or rebate depth
- Tested and approved to BS EN 1158: 1997
- 10 year guarantee
- Includes trip catch to prevent misaligned rebates in certain circumstances
- Fixings and instructions included
- Aluminium
- Note: If selectors are required to be fire rated please contact us

Finish	Cat. No.
Silver anodised aluminium	931.95.909

Order qty: 1 pc



E DBB/R100 mortice jig

- For use with jamb door closers **A, B, and C**
- Self-centring mortice jig with precision cutters complete with plastic carry case
- Comprises:
 - Mortice jig
 - Long shaft: 298 mm length (for locks and fittings up to 180 mm deep)
 - Depth stop
 - Ø 25.4 mm carbide tipped cutter
 - Ø 27.0 mm carbide tipped cutter
 - Ø 28.6 mm carbide tipped cutter
 - Instruction booklet

	Cat. No.
Mortice jig	001.67.770

Order qty: 1 pc

TCH-FF 2010, HUK. Dimensional data not binding. We reserve the right to alter specifications without notice.