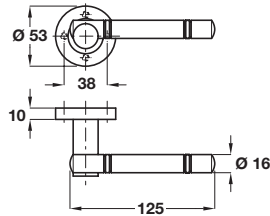




A NAN KUN lever handles

- Pair of lever handles and roses
- Sprung, for use with standard duty followers
- Bolt through fixings and 8 mm spindle included
- To suit doors 35-44 mm thick
- Stainless steel

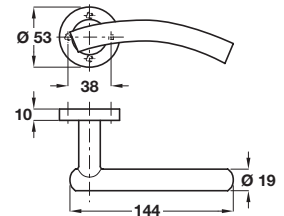


Finish	Cat. No.
Satin stainless steel	902.20.870
Polished stainless steel	902.20.871

Order qty: 1 pair

B KALINDI lever handles

- Pair of lever handles and roses
- Sprung, for use with standard duty followers
- Bolt through vertical fixings and 8 mm spindle included
- To suit doors 35-44 mm thick
- Stainless steel



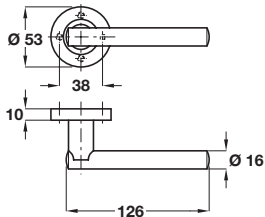
Finish	Cat. No.
Satin stainless steel	902.20.872
Polished stainless steel	902.20.873

Order qty: 1 pair



C NIBEL lever handles

- Pair of lever handles and roses
- Sprung, for use with standard duty followers
- Bolt through fixings and 8 mm spindle included
- To suit doors 35-44 mm thick
- Stainless steel

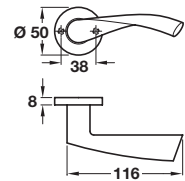


Finish	Cat. No.
Satin stainless steel	902.20.876
Polished stainless steel	902.20.877

Order qty: 1 pair

D VECTA lever handles

- Pair of lever handles and roses
- Sprung, for use with standard duty followers
- Bolt through fixings and 8 mm spindle included
- To suit doors 36-44 mm thick
- Stainless steel

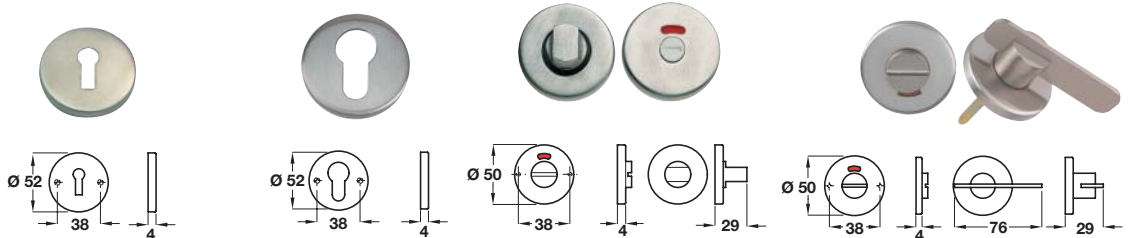


Finish	Cat. No.
Satin stainless steel	903.01.356

Order qty: 1 set

E Lever handle accessories

- **Escutcheons:**
Fixings included
- **WC/emergency release and inside turn:**
To suit doors 42-50 mm thick
Disabled release and inside turn to suit doors up to 44 mm thick
5 mm spindle and fixings included
- Stainless steel



Finish	Standard keyway escutcheon	Profile cylinder escutcheon	WC release and inside turn	Disabled release and inside turn
Satin	902.51.880	902.52.880	902.54.800*	902.54.880*
Polished	902.51.881	902.52.881	902.54.801*	902.54.891*

Order qty: 1 pc (*set)