



Important note: Solid board cutters must be used with holesaw arbourers
001.67.943 or **001.67.944** on page 56



A Solid board cutters Manufactured in the UK

- For drilling Ø 110 mm access holes in solid boards
- Covers lie flush with the floor
- Consists of: 1x Solid board cutter, 3x Plastic caps

Item	Cat. No.
SBC set	001.67.170
Replacement covers	001.67.171*

Order qty: 1 set (*1 pc)



Cable outlet cutters can be used for a variety of applications where cables or pipes need to be inserted/ passed through wooden obstructions

Important note: Cable outlet cutters must be used with holesaw arbourers **001.67.943** or **001.67.944** on page 56



B Cable outlet cutters Manufactured in the UK

- The solution to drilling fast, clean large diameter holes in wood
- Ideal for inter joist and thick wood applications
- 45 mm depth of cut
- Head geometry enables rapid penetration
- Heat treated body and cutting edges gives vastly extended tool life
- Up to 4 times faster drilling than holesaws
- Obstacles such as nails are cut cleanly and swiftly

Ø	Cat. No.
35 mm	001.67.210
55 mm	001.67.211
60 mm	001.67.212
80 mm	001.67.213

Order qty: 1 pc



C Wood beaver Manufactured in the UK

- With it's all new quad-flute and quad-cutting head design, the Wood Beaver represents the next generation in wood drill bit design
- Ultra-smooth, balanced and rapid cutting action
- Extreme durability
- Exceptionally clean breakthrough

Size	Cat. No.
10 mm	001.20.420
12 mm	001.20.421
13 mm	001.20.422
16 mm	001.20.423
18 mm	001.20.424
19 mm	001.20.425
20 mm	001.20.426
22 mm	001.20.427
25 mm	001.20.428
32 mm	001.20.429

Order qty: 1 pc

Item A.
Text amended to show replacement covers sold as 1 pc

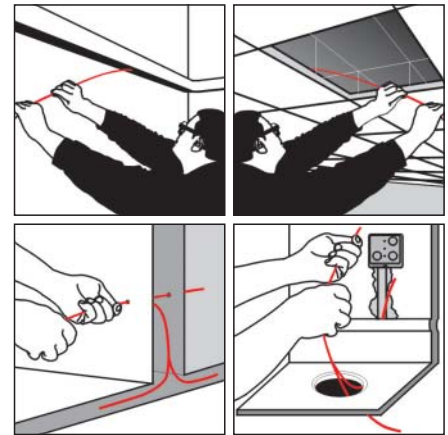


D Wood beaver set Manufactured in the UK

- 4 piece set
- Consists of: 1x 16 mm, 1x 20 mm, 1x 25 mm, 1x 32 mm

	Cat. No.
Wood beaver set	001.20.430

Order qty: 1 set



The **cable guide rod** set and accessories make the installation of wiring quick and simple. The range of different fibre rods and brass accessories can be used in a vast amount of configurations allowing greater flexibility and ease of use



E Cable guide, 10 rod set Manufactured in the UK

- Multi-function cable routing tool
- Push or pull cables into place through holes as small as 8 mm
- Pull strength of 500N due to premium grade solid brass connectors and high strength bonding agents
- **Consists of:** 10x glass fibre rods incorporating solid brass connectors, 1x mini eye brass routing accessory, 1x tuff hook brass routing accessory, 1x flexi-lead brass routing accessory

	Cat. No.
Cable guide	631.19.310

Order qty: 1 set



F Cable rod accessories set Manufactured in the UK

- For use with cable guide set **631.19.310** shown above
- **Consists of:** 1x push pull ring brass accessory, 1x flat bullet brass accessory, 1x round bullet brass accessory, 1x gender changer ring brass accessory, 1x magnet brass accessory

	Cat. No.
Cable rod accessories	631.19.319

Order qty: 1 pc