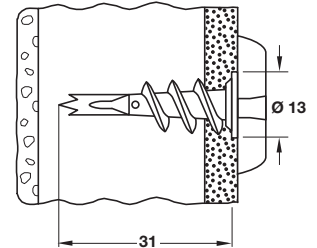


### A Fischer PD board plug

- High quality polyamide (nylon), resistant to weathering aging, corrosion and rotting
- Suitable for all normal boards and hollow-wall materials; plasterboard, fibre-plasterboard, chipboard, fibre-cement boards, wood-wool lightweight wallboards, hardboard, hollow profiles, hollow ceilings, hollow doors etc.
- Only suitable for normal chipboard screws, not for double-threaded chipboard screws
- For screw sizes:
  - Ø 4 (Ø 8 drill)
  - Ø 5 (Ø 10 drill)
  - Ø 6 (Ø 12 drill)

Length	Drill Ø	Drill depth (min)	Board thickness (min)	Cat. No.
29 mm	8 mm	31 mm	6 mm	051.68.001
28 mm	10 mm	30 mm	7 mm	051.68.002
27 mm	12 mm	28 mm	9 mm	051.68.003

Order qty: Multiples of 100 pcs



### C Fischer GKM plasterboard dowel

- Grey metal dowel, adapted for wood, self-tapping and chipboard screws Ø 4 - 5 mm
- Pan head plasterboard screw and pozi screwdriver bit included
- Suitable for plasterboard, rear insulated plasterboard
- Not suitable for tiled plasterboard

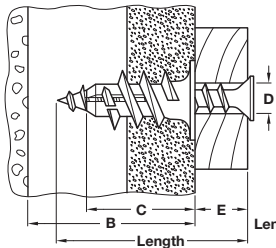
Length	To suit screw size	Cat. No.
31 mm	Ø 4 - 5 mm	051.69.000

Order qty: Multiples of 100 pcs



#### Key

- B** = 25 mm minimum thickness up to first layers
- C** = 22 mm overall length
- D** = Ø 4 to 5 mm screws
- E** = maximum working length



#### Determining minimum screw length

Dowel length **22 mm**  
 + Fastening thickness of adjacent structural member  
 = minimum screw length

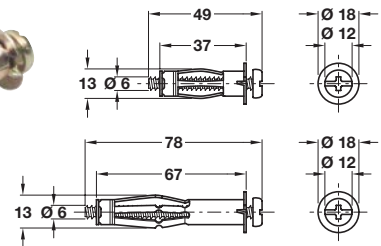
$$\text{Length} = C + E$$

### B Plasterboard GK Fischer dowel

- Only small amount of space necessary behind the board, as dowel supplied with a tool which allows the dowel to be inserted 'form-closed' in the plasterboard, not behind the board
- Grey nylon
- Fixing advantages:
  - Pre-drilling with electric drill not necessary
  - Insertion tool is also suitable for inserting the screw
  - Adapted for wood, self-tapping and chipboard screws Ø 4 - 5 mm
  - Insertion tool for boring jig installation included
  - 1 composing tool included
- Suitable for:
  - Plasterboard, rear insulated plasterboard
  - For fastening lamps, skirting, electric switches, picture frames, cable trunking, curtain rails, wooden borders, etc
- Not suitable for:
  - Fibre plasterboard or tiled plasterboard

To suit screw size	Cat. No.
Ø 4 - 5 mm	051.63.000

Order qty: Multiples of 100 pcs



### D Metal cavity fixing HM

- Suitable for plasterboard, fibreboard, chipboard, fibre cement board, lightweight wood-shaving board, hard fibreboard, hollow brick, hollow stone floors
- After installation, screw supplied can be replaced with hook, eyelet, threaded pin with metric thread, as fixing always remains in its expanded position
- Fixing can be expanded either by tightening the screw or pulling it with installation pliers
- Zinc-plated steel fixing sleeve and M6 screw

Length	For board thickness	Cat. No.
37 mm	6 - 15 mm	051.75.007
67 mm	20 - 34 mm	051.75.009

Order qty: Multiples of 50 pcs