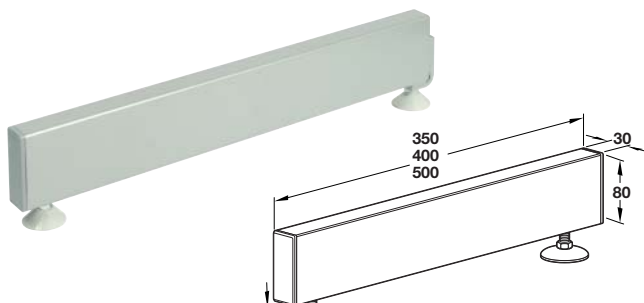


A Four sided column, double slotted on two sides

- For use with all brackets
- For use with column support rail
- Plastic coated steel

Length	Silver coloured (RAL 9006)
1315 mm	770.16.213
2115 mm	770.16.221
2515 mm	770.16.225
2915 mm	770.16.229

Order qty: 1 pc

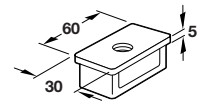
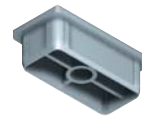


B Foot, 30 mm

- For use with 30 x 30 mm double slotted column and 60 x 30 mm columns
- With adjusting screws, adjustable +40 mm
- Plastic coated steel

Effective depth	Silver coloured (RAL 9006)
350 mm	770.16.280
400 mm	770.16.281
500 mm	770.16.282

Order qty: 1 pc

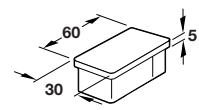
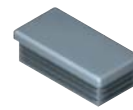


C Tubular Insert

- Plug fits into top or bottom of four sided 60 x 30 mm columns
- For use with M10 ceiling screw and adjustment feet
- Zinc alloy

Finish	Bright
Cat. No.	770.16.292

Order qty: 1 pc

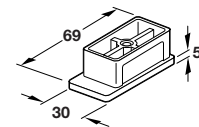


D Trim cap

- Plug fits in 30 x 60 mm columns
- Plastic

Finish	Silver coloured (RAL 9006)
Cat. No.	770.16.293

Order qty: 1 pc

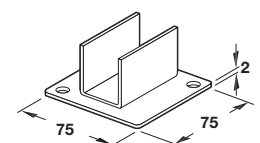


E Column insert with M10 thread

- Plug fits into top or bottom of four sided 60 x 30 mm columns
- With bearer for back panel
- For use with M10 ceiling screw and adjustment feet
- Zinc alloy

Finish	Bright
Cat. No.	770.16.294

Order qty: 1 pc



F Column foot

- For 60 x 30 mm columns
- Plastic coated steel

Finish	Silver coloured (RAL 9006)
Cat. No.	770.16.295

Order qty: 1 pc

TCH-FF 2010, HUK. Dimensional data not binding. We reserve the right to alter specifications without notice.