



## Ropox flexible kitchen systems

Height adjustable wall cupboard and worktop systems are ideal for kitchens in care homes, school facilities and private homes.

All Ropox systems are high-quality, stable and safe, with modules that may be combined into a variety of individual solutions, making them ideal for wheelchair users and people of various heights.

Hobs and sinks can be set into the height adjustable worktops.

Control buttons for adjustment of worktop and cupboard height may be placed in the front of the worktop. The buttons are easy to read and operate.

**Flexi** adjustable worktop system; pages 212-213

**FlexiCorner** set for use with Flexi systems; page 213

**Diagonal** adjustable wall unit system; page 214

**VertiElectric** adjustable wall unit system, page 215

**FlexiBasic** and **VertiBasic** systems; pages 216-217

**4Single** adjustable table frame system; page 218

**Brackets** for semi-permanent adjustment; page 219



## Flexi adjustable worktop frames, shown on pages 212-213

Quick and easy mounting on wall

If the wall is non-loadbearing feet can be added to the frame to increase stability

Manual or electrical adjustment

Optional placing of hand crank for manual adjustment

Electrical adjustment by means of one or two low-noise motors

Range of adjustment: 650-950 mm

Frame may be cut to suit any length of worktop between 600-3000 mm

White painted steel

## Ordering guide for Flexi height adjustable worktop system

**For 1 m length worktop**

1x **Wall bar profile** (order profile for 2 m worktop and cut to 950 mm)

2x **Legs**

2x **Supports for worktop**

**For 2 m length worktop**

1x **Wall bar profile**  
(1950 mm length for 2 m worktop)

2x **Legs**

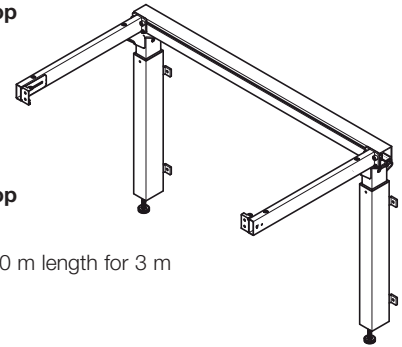
4x **Supports for worktop**

**For 3 m length worktop**

1x **Wall bar profile** (2950 mm length for 3 m worktop)

3x **Legs**

7x **Supports for worktop**



**Cover for leg** and **supporting foot** optional.

Choose either **handle** for manual adjustment or **motor/s and control box** for electric adjustment.

### Number of motors required:

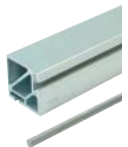
For worktops less than 1 m in length 1 motor must be used.

For worktops over 1 m in length 2 motors must be used.

Control box should be ordered as a 1 or 2 motor version to match.

### Wall bar profile and spindle

- With 8 mm steel spindle
- Bar profile: 50 x 50 mm
- Can be cut to size (profile by 50 mm less than worktop, spindle by 100 mm less than profile)
- Aluminium

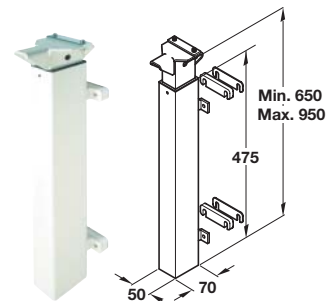


Wall bar profile / Spindle length	For worktop length	Cat. No.
1950 / 1850 mm	2 m	506.16.001
2950 / 2850 mm	3 m	506.16.002

Order qty: 1 pc

### Leg

- Leg allows height adjustment from 650-950 mm
- Includes wall spacers
- Painted steel



Finish	Cat. No.
White	506.16.730

Order qty: 1 pc

### Cover for leg

- For use with or without supporting foot
- White painted steel

For use	Cat. No.
without supporting foot	506.16.733
with supporting foot	506.16.734

Order qty: 1 pc

### Supporting foot

- With levelling screw
- Width: 78 mm
- White painted steel



Length	Cat. No.
300 mm	506.16.731
490 mm	506.16.732

Order qty: 1 pc