

# Panic Exit Devices

## Single Panic Bolts

### Panic hardware maintenance

It is important that all panic and emergency exit hardware devices are inspected and maintained properly to ensure safety is maintained when exiting a building in any situation.

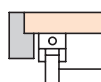
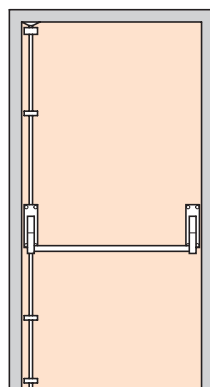
Once a device is fitted, regular maintenance is recommended.

#### Weekly:

- Make sure the exit device functions correctly
- Any fixings that have worked loose should be re-secured
- Any damaged components should be replaced
- Ensure there are no obstructions which prevent the panic unit from functioning correctly

#### Every three months:

- Check for wear, any visible worn components should be replaced



For further information on **BS EN 1125**, please refer to the Standards pages shown at the back of this catalogue

4

StarTec

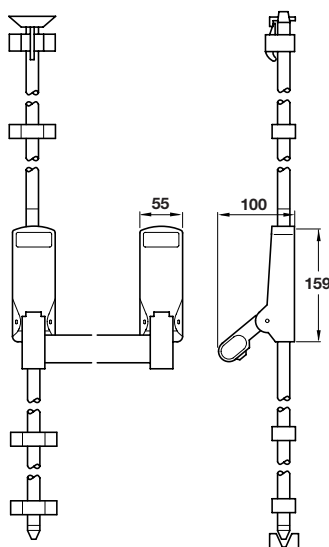
certifire CE

BS EN 1125:1997 A1:2001



### A Single panic bolt

- For single outward opening doors up to max. 2400 mm high x 1220 mm wide
- Used in conjunction with another single bolt for pair of plain meeting stile double doors. For pair of rebated doors, see page 46)
- Push bar and shoots supplied with plugs for on-site cutting
- Easy clean floor socket included
- Anti-thrust device to prevent leverage of shoots
- Shoot bolts automatically held retracted when door is in open position, and released on closing
- Suits either hand
- Exit only
- Tested and approved to BS EN 1125
- Certifire approved; certificate no. 392 60 mins for timber doors
- Fixings included, for timber doors
- Self adhesive vinyl 'Push bar to open' sign included
- Diecast aluminium and mild steel. Epoxy powder coated or plated finish\*
- **Please note:**  
We strongly recommend the use of hinge bolts or security hinges with panic hardware
- We are able to supply this product with passivate protection, larger sizes and micro-switches to order, subject to quantity
- RAL colours available to order, subject to quantity\*\*
- For external access devices to suit, please refer to page 49
- For Pullman catch kits, refer to page 48
- For screw fixing versions of signage associated with panic exit devices, i.e. 'Push bar to open' and 'Fire escape keep clear' refer to pages 10 and 12



Finish	Cat. No.
Silver	911.52.109
Gold	911.52.108
Satin stainless steel	911.52.100*
Polished stainless steel	911.52.101*
Polished brass	911.52.105*
RAL colours	To order**

Order qty: 1 set