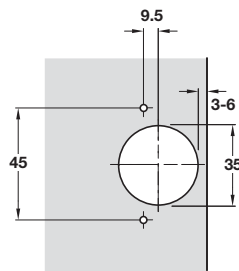


A A-Series clip on, concealed hinge, 110°

- Opening angle 110°
- 0 mm or 8 mm crank
- Self closing
- Screw fixing
- Clip mount feature
- For door thickness 14 - 26 mm
- Side panel thickness from 16 mm
- Nickel plated steel cup and arm

Crank	Cat. No.
0	311.60.500
8	311.60.501

Order qty: 250 pcs

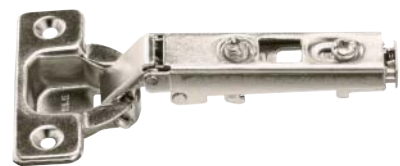
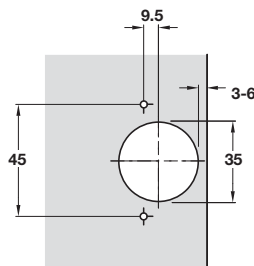


B A-Series clip on, concealed hinge, 125°

- Opening angle 125°
- 0 mm or 8 mm crank
- Self closing
- Screw fixing
- Clip mount feature
- For door thickness 14 - 26 mm
- Side panel thickness from 16 mm
- Nickel plated steel cup and arm

Crank	Cat. No.
0	311.97.500
8	311.97.502

Order qty: 250 pcs

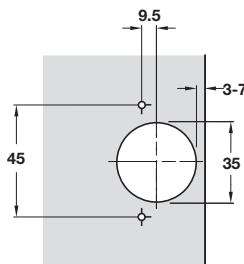


C A-Series clip on, concealed hinge, 165°

- Opening angle 165°
- 0 mm or 9 mm crank
- Self closing
- Screw fixing
- Clip mount feature
- For door thickness 14 - 26 mm
- For inset applications: max door thickness 19 mm
- Side panel thickness from 16 mm
- Nickel plated steel cup and arm

Crank	Cat. No.
0	311.63.500
9	311.63.502

Order qty: 100 pcs

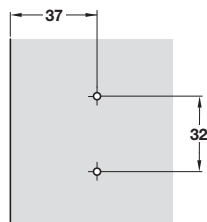


D Flanged mounting plate

- For use with A-Series clip hinges only
- Flanged mounting plates, in one piece, screw mounted
- Edge spacing 37 mm
- With vertical adjustment
- Nickel plated matt steel

Height	Cat. No.
0 mm	311.71.500
2 mm	311.71.502
4 mm	311.71.504

Order qty: 250 pcs

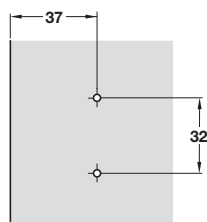


E Flanged mounting plate

- For use with A-Series clip hinges only
- Flanged mounting plates, in one piece, screw mounted
- With pre-installed euro mounting screws
- 10 mm length for single-side mounting
- Edge spacing 37 mm
- With vertical adjustment
- Nickel plated matt steel

Height	Cat. No.
0 mm	311.71.510
2 mm	311.71.512
4 mm	311.71.514

Order qty: 250 pcs



We reserve the right to alter specifications without notice.

Dimensions in mm