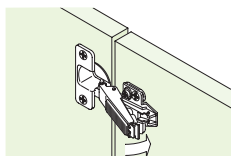


- Opening angle **95°**
- Sprung
- Ø 35 mm cup
- Screw fixing cup
- Click on arms
- Cup: Nickel-plated pressed steel
- Arm: Nickel-plated zinc alloy
- Mounting plates for click on hinges are shown on pages **21-22**
- **Hinge arm cover plates** are shown on page **23**
- **Soft close fitting** shown on page **23**

Screw fixing

NT Quick

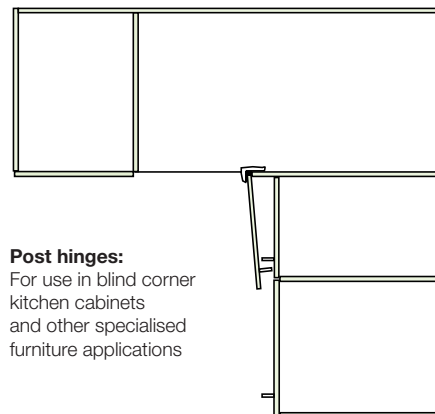
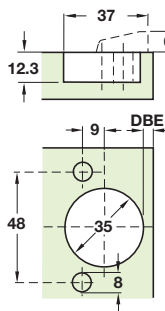
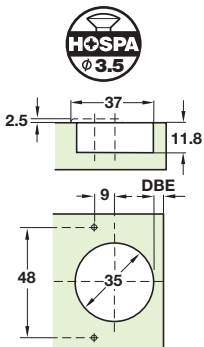


Click on

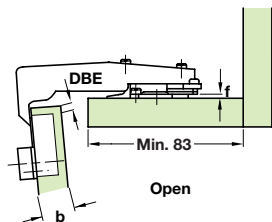
Click on system, sprung

	Screw fixing	NT Quick fixing
Cat. No.	322.27.530	322.59.630

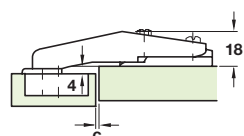
Order qty: Multiples of 10 pcs



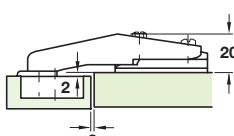
Post hinges:
For use in blind corner kitchen cabinets and other specialised furniture applications



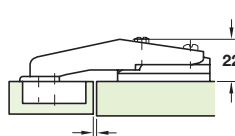
- DBE** = Distance of the bore from the edge of the door
- b** = Thickness of the door
- c** = Required gap
- f** = Mounting plate thickness



Mounting plate thickness $f = 0$



Mounting plate thickness $f = 2$



Mounting plate thickness $f = 4$

