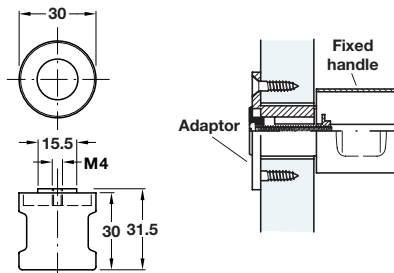


B Fixed handle for use with adaptor

- With M4 internal thread
- For maximum wood thickness 19 mm
- Matt nickel plated zinc alloy
- **Accessory:** 1 M4 x 25 mm mounting screw

Cat. No. 229.82.600

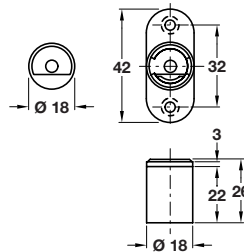
Order qty: 1 pc

**C Adaptor, with cover cap**

- Matt nickel plated zinc alloy

Cat. No. 229.82.690

Order qty: 1 pc

Re-instated**E Cover plate for handles**

- When using lock handles without a cylinder core, a cover cap (1.2 mm or 4.2 mm) has to be ordered to cover the aperture
- Matt nickel plated zinc alloy

Size	Flush fitting	Cat. No.
1.2 mm	for 30 mm handle	229.83.691
4.2 mm	for 33 mm handle	229.83.692

Order qty: 1 pc

