

Item A.

Catalogue shows...

'For maximum 50 mm door thickness'
Correct description is 'For minimum 44 mm door thickness'

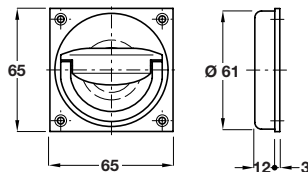
A Flush ring pull handle, 65 x 65 mm

• For minimum **44 mm** door thickness

- 8 mm spindle included to operate mortice latch
- Fixing screws included
- Brass

Finish	Cat. No.
Satin nickel plated	901.03.906
Polished brass	901.03.908

Packing: 1 pc



Polished brass finish shown



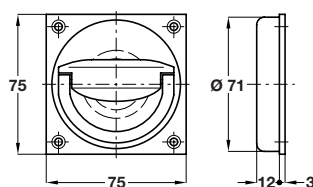
B Flush ring pull handle, 75 x 75 mm

• For maximum **50 mm** door thickness

- 8 mm spindle included to operate mortice latch
- Fixing screws included
- Brass

Finish	Cat. No.
Satin nickel plated	910.37.008
Polished brass	910.37.017

Packing: 1 pc



Polished brass finish shown



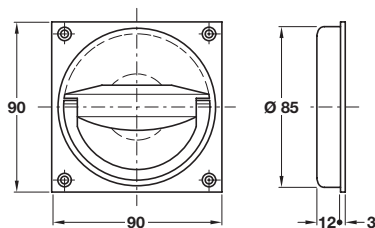
C Flush ring pull handle, 90 x 90 mm

• For maximum **50 mm** door thickness

- 8 mm spindle included to operate mortice latch
- Fixing screws included
- Brass

Finish	Cat. No.
Satin nickel plated	901.03.916
Polished brass	901.03.918

Packing: 1 pc



Polished brass finish shown



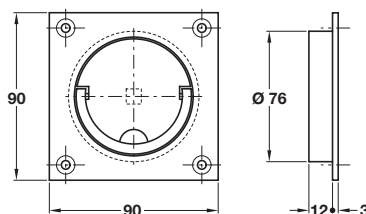
D Squash court handle, 90 x 90 mm

• For maximum **60 mm** door thickness

- 8 mm spindle included to operate latch
- Fixing screws included
- Brass

Finish	Cat. no.
Satin nickel plated	901.00.510

Packing: 1 pc



Item E.

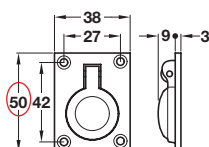
Catalogue shows 52 mm
 Correct dimension is
 50 mm

E Flush ring pull handle, 50 x 38 mm

- Fixing screws included
- Brass

Finish	Cat. No.
Polished brass	901.03.808
Satin chrome	901.03.804

Packing: 1 pc



Satin chrome finish shown

