

Discontinued ●

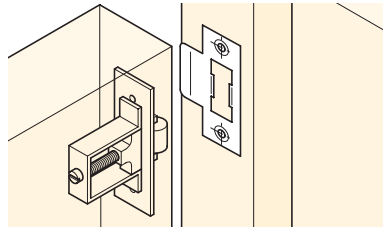
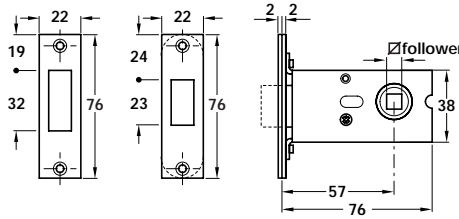
Discontinued when stock = 0 +

A Mortice bathroom deadlock

- **Operation:** Deadbolt operated by turn
- **Case:** Powder coated steel
- **Forend:** Square, 2 piece, stainless steel or brass
- **Strike plate:** Square, flat included
- **Deadbolt:** Brass, 10 mm throw
- **Follower:** 5 and 8 mm
- Fixing screws included

Finish of forend	5 mm	8 mm
Satin stainless steel	911.22.364	911.22.365
Polished brass	911.22.330	911.22.366

Packing: 1 pc



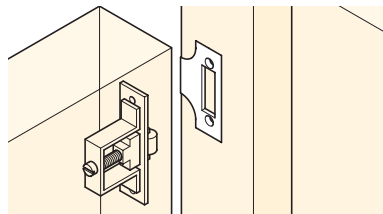
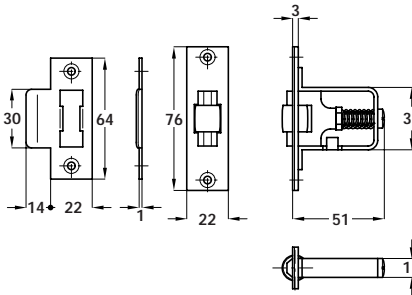
B Mortice roller catch

- **Operation:** Adjustable roller bolt
- **Frame:** Zinc coated steel
- **Forend:** Square, 2 piece, stainless steel or brass
- **Strike plate:** Square, flat, included
- **Duty:** Full size doors, minimum thickness 30 mm
- Fixing screws

Finish	Cat. No.
Satin stainless steel	+ 243.15.010
Polished brass	+ 243.15.810

Packing: 1 pc

Discontinued when stock=0
 For 243.15.010 use alt. no. 911.24.010
 For 243.15.810 use alt. no. 911.24.011



C Mortice roller catch

- **Operation:** Adjustable roller bolt
- **Frame:** Zinc coated steel
- **Forend:** Square, 2 piece, stainless steel or brass
- **Strike plate:** Square, flat included
- **Duty:** Cupboard doors, minimum thickness 18 mm
- Fixing screws included

Finish	Cat. No.
Satin stainless steel	● 243.15.000
Polished brass	● 243.15.800

Packing: 1 set

