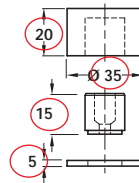
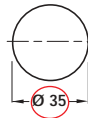


A Door stop

- Floor fixing
- Fixing screw included
- Aluminium base with black rubber bumper

Cat. No.	940.09.310
Packing:	1 pc

Reinstated



Item A.
 Catalogue shows 40 mm, 25 mm, 40 mm, 21.5 mm and 3 mm
 Correct dimensions are
 35 mm, 20 mm, 35 mm, 15 mm and 5 mm



Discontinued

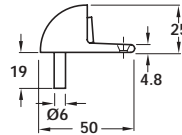
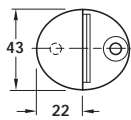
Discontinued when stock = 0

B Door stop

- 4.8 mm base thickness
- Floor fixing
- Fixing screw and plastic plug included
- Cast brass with grey rubber bumper

Finish	Cat. No.
Polished brass	● 940.09.122
Satin matt chrome plated	● 940.09.140

Packing: 1 pc



Discontinued

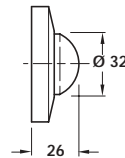
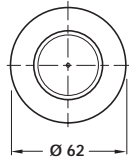
For 940.09.211 use new no. 937.00.908
 For 940.09.248 use new no. 937.11.700

C Door stop, Ø 62 mm

- Wall fixing (concealed)
- Fixing screw and plastic plug included
- Brass or stainless steel

Finish	Cat. No.
Polished brass	● 940.09.211
Satin stainless steel	● 940.09.248

Packing: 1 pc

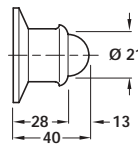
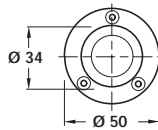


D Heavy duty door stop, 40 mm projection

- Wall fixing
- Fixing screws included
- Cast brass with black rubber bumper

Finish	Cat. No.
Polished brass	940.09.325
Satin nickel plated	940.09.320

Packing: 1 pc

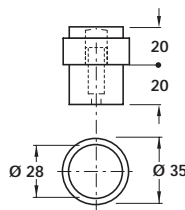


E Door stop

- Floor fixing
- Fixing bolt included
- Stainless steel with black rubber bumper

Finish	Cat. No.
Polished stainless steel	937.51.701
Satin stainless steel	937.51.720

Packing: 1 pc

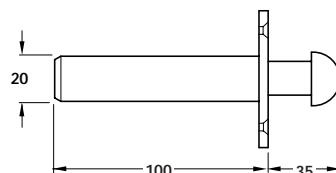


F Mortice spring bumper

- Morticed into door centre rail or frame jamb
- Galvanised steel construction with black rubber bumper

Cat. No.	930.00.054
----------	------------

Packing: 1 pc



G Buffer

- Wall fixing
- Black rubber

Cat. No.	941.80.050
----------	------------

Packing: 1 pc

