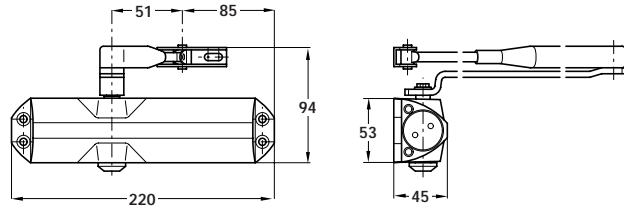




**A** Overhead door closer, Dorma TS68

- Power size 2-4
- Maximum door weight 80 kg
- Closing and latch speed adjustable
- Conforms to BS EN 1154. 1997
- 2 hour Certifire rated to EN 1634-1
- Universal fixing
- Maximum door width 1100 mm
- Cast aluminium body
- Steel arm assembly



**A** Overhead door closer, Dorma TS68

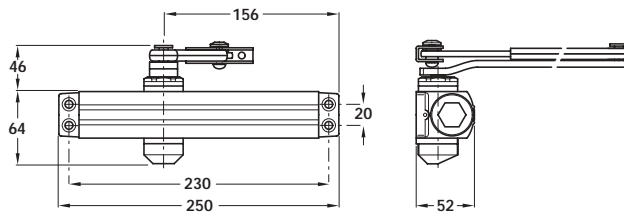
Finish	Cat. No.
Silver sprayed	931.07.059
Gold sprayed	931.07.058

Packing: 1 pc



**B** Overhead door closer, power size 1 - 4

- Maximum door weight 80 kg
- Backcheck and delayed action
- Adjustable closing speed
- Universal fixing/application
- Maximum door width 1100 mm
- Cast aluminium body
- Black arm assembly



**B** Overhead door closer, power size 1 - 4

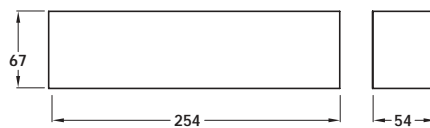
Finish	Cat. No.
Black	931.82.623

Packing: 1 pc



**C** Door closer covers

- For use with door closer B
- Metal, finished



**C** Door closer covers

Finish	Cat. No.
Black	931.82.903
Silver sprayed	931.82.901
Satin nickel	931.82.906
Polished nickel	931.82.907
Polished brass	931.82.908

Packing: 1 pc

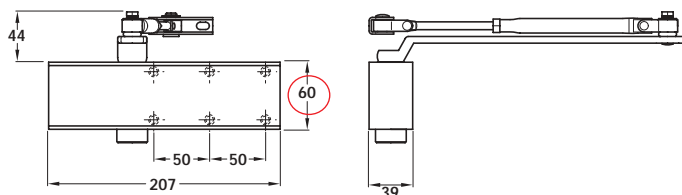


**D** Overhead door closer, dual size 3-4

- Surface door closer
- Power size 3 and 4
- Door weights 40 kg - 80 kg
- Conforms to BS EN 1154. 1996
- Successful UK fire test to BS476
- Universal fixing
- Aluminium body

**Item D.**  
Catalogue shows 43 mm  
Correct dimension is  
60 mm

**Item D.**  
Catalogue shows 60 mm  
Dimension has been  
removed as incorrect



**D** Overhead door closer, dual size 3-4

Finish	Cat. No.
Polished anodised	931.83.601

Packing: 1 pc