



Blue Star Range of Architectural Ironmongery Polished and Satin Stainless Steel Ancillary Items

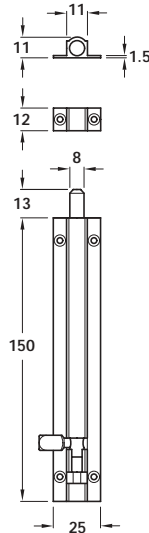
HÄFELE

Architectural Ironmongery Sales and Technical Support - Tel: 01788 548855, Fax: 01788 548850, E-Mail: ai@hafele.co.uk

Dimensions in mm

12

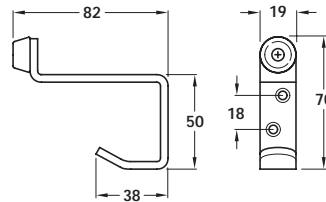
Polished and Satin Stainless Steel Ancillary Items



- **A** Barrel bolt, 150 x 25 mm
- Straight
- Keep and fixings included
- Satin chrome-plated brass with satin stainless steel effect finish

A Barrel bolt, 150 x 25 mm

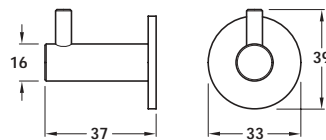
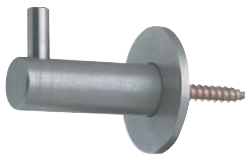
Cat. No.	911.62.435
Packing:	1 pc



- **B** Buffered hat and coat hook
- Fixing screws included
- Stainless steel

B Buffered hat and coat hook

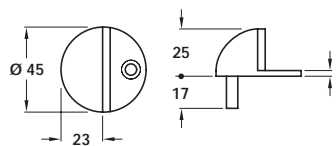
Finish	Cat. No.
Satin	842.48.000
Polished	842.48.090
Packing:	1 pc



- **C** Coat hook
- Concealed fixing
- Fixing screw and rawl plug included
- Stainless steel

C Coat hook

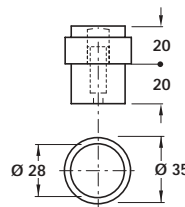
Finish	Cat. No.
Satin	842.48.070
Polished	842.48.075
Packing:	1 pc



- **D** Door stop, dome shape
- Fixings included
- For timber floors
- Stainless steel

D Door stop, dome shape

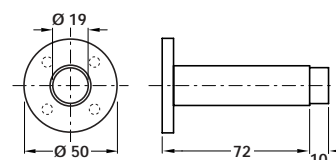
Finish	Cat. No.
Satin	937.12.000
Polished	937.51.751
Packing:	1 pc



- **E** Door stop, cylindrical
- With fixing bolt
- Stainless steel

E Door stop, cylindrical

Finish	Cat. No.
Satin	937.51.720
Polished	937.51.701
Packing:	1 pc



- **F** Door stop, 82 mm projection
- Wall fixing (concealed)
- Fixing screws included
- Steel and rubber

F Door stop, 82 mm projection

Finish	Cat. No.
Satin	937.11.600
Polished	937.11.601
Packing:	1 pc