

# Cabinet & Kitchen Fixings

Cabinet Knobs .....	35-36
Pull Handles .....	37
Cup & Flush Handles .....	38
Drawer Runners .....	39
Plinth Feet & Accessories .....	40
Catches & Latches .....	41
Cabinet Locks .....	42
Cabinet Hinges .....	42
Bookcase Strips .....	43
Shelving & Brackets .....	44
Wardrobe & Hand Rails .....	45



### Victorian Cabinet Knob - Various Finishes

- Manufactured from solid brass.
- Size = Knob & Rose ø.



Size	Polished Brass	Polished Chrome	Satin Chrome	Satin Nickel	Dark Bronze	Antique Brass	Matt Black	Polished Nickel	Satin Brass
25mm	34010	37142	37150	30104	30118	CB91AB	CB91MB	CB91PN	CB91SB
32mm	34011	37143	37151	30104/1	30118/1	CB92AB	CB92MB	CB92PN	CB92SB
38mm	34012	37144	37152	30104/2	30118/2	CB93AB	CB93MB	CB93PN	CB93SB
42mm	34013	37144/1	37152/2	30104/3	30118/3	CB94AB	CB94MB	CB94PN	CB94SB
50mm	34018	37145	37152/1	30104/4	30118/4	CB95AB	CB95MB	CB95PN	CB95SB

### Queen Anne Cabinet Knob - Various Finishes

- Size = Knob/Rose ø.



Size	PC	SC	PB	FB	SB	MB
23/25mm	37146/1	37147/1	37148/1	37149/1	30155	30154
28/30mm	37146/2	37147/2	37148/2	37149/2	30157	30156
35/38mm	37146	37147	37148	37149	30159	30158

### Oxford Cabinet Knob

- Knob Width - 38mm.
- Rose Diameter - 25mm.



Finish	Product Code
Polished Chrome	30112
Satin Nickel	30113
Gun Metal	30160
Matt Black	30161
Satin Copper	30162

### Knurled Cabinet Knob

- Height - 34mm.
- Rose Diameter - 19mm.
- Knob Width - 35mm.



Finish	Product Code
Antique Brass	CB88AB
Matt Black	CB88MB
Polished Chrome	CB88PC
Satin Brass	CB88SB
Satin Nickel	CB88SN

### Knurled T-Bar Cabinet Knob

- Pull Length - 50mm.
- Pull Diameter - 13mm.
- Rose Diameter - 19mm.
- Bar Projection - 40mm.



Finish	Product Code
Antique Brass	CB61AB
Matt Black	CB61MB
Polished Chrome	CB61PC
Satin Brass	CB61SB
Satin Nickel	CB61SN

### Knurled Cabinet Knob

- Projection: 30mm.
- Diameter: 18mm.



Finish	Product Code
Antique Brass	CB60AB
Matt Black	CB60MB
Polished Chrome	CB60PC
Satin Brass	CB60SB
Satin Nickel	CB60SN

### Turned Wooded Cabinet Knob

- Unfinished with threaded insert for M4 fixing.



Pine

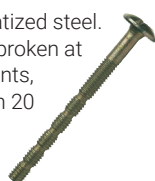
Beech

Oak

Size	Pine	Beech	Oak
34mm	30127	30128	30126
44mm	-----	30129	30124
49mm	-----	-----	30131

### M4 45mm Snap-off Screw

- Yellow chromated steel.
- Screw can be broken at 5 mm increments, shortest length 20 mm.



Product Code
10400

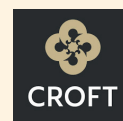
### Handle Jig

- Accurately marks out door and drawer fronts in preparation for fixing handles & knobs.



Product Code
40050

### Brands We Offer



## FTA Oval Knob

- 33mm Knob Size:  
33mm x 22mm.
- 40mm Knob Size:  
40mm x 27mm.



Finish	33mm	40mm
Aged Brass	46725	46726
Polished Brass	83885	83879
Polished Nickel	83886	83880
Polished Chrome	92034	92033
Aged Bronze	92036	92035
Polished Bronze	46727	46728

## FTA Mushroom Knob

- 32mmø Rose Size: 33mmø.
- 32mmø Projection: 36mm.
- 38mmø Rose Size: 39mmø.
- 38mmø Projection: 40mm.



Finish	32mmø	38mmø
Aged Brass	46723	46724
Polished Brass	83883	83877
Polished Nickel	83884	83878
Polished Chrome	92032	92031
Aged Bronze	90345	90344
Polished Bronze	91950	91949

## FTA Ball Knob

- 31mmø Rose Size: 36mmø.
- 31mmø Projection: 44mm.
- 38mmø Rose Size: 42mmø.
- 38mmø Projection: 57mm.



Finish	31mmø	39mmø
Polished Brass	83887	83881
Polished Nickel	83888	83882

## FTA Beehive Knob

- 30mmø Projection: 29mm.
- 40mmø Projection: 33mm.



Finish	30mmø	40mmø
Aged Brass	83865	83866
Polished Brass	91769	91770
Polished Nickel	83867	83868
Polished Chrome	90337	90336
Satin Chrome	46663	46662
Polished Bronze	91948	91947
Aged Bronze	90339	90338

## FTA Prestbury Knob

- 32mmø Rose Size: 30mmø.
- 32mmø Projection: 38mm.
- 38mmø Rose Size: 36mmø.
- 38mmø Projection: 40mm.



Finish	32mmø	38mmø
Aged Brass	83895	83896
Polished Nickel	83897	83898
Polished Chrome	90341	90340
Aged Bronze	90343	90342

## FTA Hammered Mushroom Knob

- 32mmø Rose Size: 33mmø.
- 32mmø Projection: 36mm.
- 38mmø Rose Size: 39mmø.
- 38mmø Projection: 40mm.



Finish	32mmø	38mmø
Aged Brass	46021	46026
Polished Chrome	46023	46028
Polished Nickel	46022	46029
Aged Bronze	46024	46030
Polished Bronze	46025	46027

## FTA Beehive Knob

- 35mmø Rose Size: 32mmø.
- 35mmø Projection: 50mm.
- 38mmø Rose Size: 37mmø.
- 38mmø Projection: 55mm.



Finish	35mmø	38mmø
Rosewood/PN	83873	83874
Rosewood/AB	83875	83876
Ebony/PN	83869	83870
Ebony/AB	83871	83872

## FTA Oval Knob

- Knob Size: 40mm x 30mm.
- Projection: 33mm.



Finish	Product Code
Pewter	83787
Black	83790
Beeswax	83791

## FTA Hammered Knob

- 20mmø Projection: 20mm.
- 30mmø Projection: 25mm.
- 40mmø Projection: 31mm.



Size	Pewter	Black	Beeswax
20mmø	33705	33840	33196
30mmø	33626	33992	33197
40mmø	33625	33993	33198

## FTA Elan Knob

- 33mmø Projection: 28mm.
- 38mmø Projection: 30mm.



Finish	33mmø	38mmø
Black	33364	33363
Natural Smooth	33360	33359
Beeswax	33362	33361

## FTA Octagonal Knob

- 32mmø Rose Size: 25mmø.
- 32mmø Projection: 37mm.
- 39mmø Rose Size: 25mmø.
- 39mmø Projection: 42mm.



Finish	32mmø	39mmø
Black	33372	33373
Natural Smooth	33366	33367
Beeswax	33369	33370

## FTA Ringed Knob

- 32mmø Projection: 29mm.
- 38mmø Projection: 36mm.



Finish	32mmø	38mmø
Black	83511	83513
Natural Smooth	83512	83514
Beeswax	33379	33380

## FTA Ribbed Knob

- Knob Size: 32mmø.
- Projection: 21mm.



Finish	Product Code
Natural Smooth	33365
Black	33371
Beeswax	33368

## FTA Regency Knob

- 30mmø Projection: 29mm.
- 40mmø Projection: 36mm.



Finish	30mmø	40mmø
Black	92099	92101
Pewter	45149	45150
Beeswax	92100	92102

## FTA Twist Knob

- Size: 30mmø.
- Projection: 41mm.



Finish	Product Code
Pewter	33691
Black	33376
Beeswax	33375

## FTA Flower Knob

- 32mmø Projection: 41mm.
- 38mmø Projection: 44mm.



Finish	32mmø	38mmø
Black	83507	83509
Natural Smooth	83508	83510
Beeswax	33377	33378



## From The Anvil Bean Pull Handle

- Handmade.



Size	Pewter	Black	Beeswax
4"	33645	33997	33168
6"	33646	33998	33169
8"	33647	33999	33167

## From The Anvil Gothic Pull Handle

- Handmade.



Size	Pewter	Black	Beeswax
4"	33640	33994	33151
6"	33641	33995	33152
8"	33642	33996	33153

## Kirkpatrick Pull Handle - Smooth Black

- Size: (73365)  
Overall Length: 101mm
- Size: (73367)  
Overall Length: 127mm



Finish	Product Code
Black	73365 (2788)
Ant. Black	73367 (937)

## Budget Fleur-de-lys Pull Handle - Black



Size	Product Code
102mm	73360
167mm	73362

## Kirkpatrick Fleur-de-lys Pull Handle (564) - Smooth Black



Size	Product Code
152mm	73361
177mm	73366
228mm	73605

## From The Anvil Twist Pull Handle

- Handmade.
- Size: 176mm x 27mm.



Finish	Product Code
Black	83666
Beeswax	83665

## From The Anvil Regency Pull Handle



Finish	131mm	191mm	265mm
Aged Brass	92085	92091	92097
Pol. Chrome	92084	92090	92096
Pol. Nickel	92083	92089	92095
Black	92081	92087	92093
Pewter	45151	45152	45153
Beeswax	92082	92088	92094

## From The Anvil Bar Pull Handle

- Fixing Centres:  
156mm = 96mm  
220mm = 160mm  
344mm = 282mm



Finish	156mm	220mm	344mm
Black	33356	33357	33358
Nat. Smooth	33350	33351	33352
Beeswax	33353	33354	33355

## Shaker Handle

- Overall Length - 128mm
- Centres - 76mm



Finish	Product Code
Polished Chrome	40115
Satin Nickel	40116
Satin Brass	40117

## Block Pull Handle

- Thickness: 10mm.



Finish	170mm	330mm
Antique Brass	CB96AB	CB97AB
Matt Black	CB96MB	CB97MB
Polished Chrome	CB96PC	CB97PC
Satin Brass	CB96SB	CB97SB
Satin Copper	CB96SCO	CB97SCO
Satin Nickel	CB96SN	CB97SN

## Square Mitred Pull Handle - 304 SS

- Length: 449mm.
- Thickness: 19mm.



Finish	Product Code
Matt Black	CB72MB
Satin SS	CB72SSS

## Knurled Pull Handle

- Bar ø: 13mm.



Finish	158mm	190mm
Antique Brass	CB58AB	CB59AB
Matt Black	CB58MB	CB59MB
Polished Chrome	CB58PC	CB59PC
Satin Brass	CB58SB	CB58SB
Satin Nickel	CB58SN	CB58SN

## Knurled Pull Handle

- Bar ø: 20mm.



Finish	300mm	450mm
PVD SS	CB73PVD	CB74PVD
Satin SS	CB73SSS	CB74SSS
Matt Black SS	CB73MB	CB74MB

## Varese Pull Handle

- Bar ø: 22mm.



Finish	300mm	500mm
Antique Brass	CB81AB	CB82AB
Satin Brass	CB81SB	CB82SB
Satin Nickel	CB81SN	CB82SN
Matt Black	CB81MB	CB82MB
Matt Bronze	CB81MBRZ	CB82MBRZ

## T-Bar Handle

- NB: 40113 & 40114 have a centre support.
- Bar ø: 12mm.



Size/Centres	SN	PC	MB
156/96mm	40100	-----	-----
188/128mm	40101	CB84PC	CB84MB
220/160mm	40102	CB85CP	CB85MB
252/192mm	40103	-----	-----
284/224mm	40104	-----	-----
348/288mm	40105	CB86CP	CB86MB
412/352mm	40106	-----	-----
444/384mm	40107	-----	-----
508/448mm	40108	-----	-----
572/512mm	40109	-----	-----
668/608mm	40110	CB87PC	CB87MB
700/640mm	40111	-----	-----
828/768mm	40112	-----	-----
1020/960mm	40113	-----	-----
1084/1024mm	40114	-----	-----

## Oxford Cup Pull

- For use with Oxford cabinet knob on page 35.
- Size: Overall: 92mm.
- Centres: 76mm.



Finish	Product Code
Satin Nickel	30092
Polished Chrome	30092/1
Gun Metal	30092/2
Matt Black	30092/3
Satin Copper	30092/4

## Victorian Cup Pull

- For use with Victorian cabinet knob on page 35.
- Size: Overall: 92mm.
- Fixing Centres: 76mm.



Finish	Product Code
Polished Brass	30105
Polished Chrome	30106
Satin Nickel	30107
Antique Brass	30150
Matt Black	30151
Polished Nickel	30152
Satin Brass	30153

## Plain Drawer Pull

- Screws not supplied.
- Size: 87mm x 35mm.



Finish	Product Code
Polished Brass	30088
Polished Chrome	30088/CP
Satin Chrome	30088/SC

## From The Anvil Plain Drawer Pull

- Size: 93 x 45mm.



Finish	Product Code
Black	83680
Natural Smooth	83682
Beeswax	83681
Aged Brass	91522
Polished Chrome	91523
Polished Nickel	91524
Aged Bronze	91525
Polished Bronze	91961

## From The Anvil Regency Drawer Pull

- Size: 85 x 40mm.



Finish	Product Code
Black	46132
Pewter	46134
Beeswax	46133
Aged Brass	45405
Polished Brass	45410
Polished Chrome	45407
Polished Nickel	45406
Satin Chrome	45411
Aged Bronze	45408
Polished Bronze	45409

## From The Anvil Flower Drawer Pull

- Size: 98mm x 51mm.



Finish	Product Code
Black	83677
Natural Smooth	83520
Beeswax	83673

## From The Anvil Art Deco Drawer Pull

- Size: 100 x 42mm.



Finish	Product Code
Black	46135
Pewter	46137
Beeswax	46136
Aged Brass	45400
Polished Chrome	45402
Polished Nickel	45401
Aged Bronze	45403
Polished Bronze	45404

## From The Anvil Hammered Art Deco Drawer Pull

- Size: 100 x 42mm.



Finish	Product Code
Aged Brass	46036
Polished Chrome	46038
Polished Nickel	46037
Aged Bronze	46039
Polished Bronze	46040

## Flush Pull

- Screws not supplied.



Finish	3"	4"
Polished Brass	30096/1	30096
Polished Chrome	30097/1	30097
Satin Chrome	30098/1	30098
Copper	-----	31107
Black	-----	31106
Satin SS	-----	30099

## From The Anvil Flush Pull

- Size: 117 x 57mm.
- Internal Size: 90 x 30mm.
- Depth: 13mm.



Finish	Product Code
Black	73128
Pewter	83654

## Round Flush Pull

- Size: See table.



Finish	30mmø	65mmø
Black	31112	31120
Copper	31113	31121

## Round Flush Finger Pull

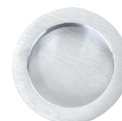
- Overall ø: 30mm.
- Internal ø: 24mm.
- Depth: 22mm.



Finish	Product Code
Polished Brass	31108
Polished Chrome	31109
Satin Chrome	31110
Satin Nickel	31111
Antique Brass	31114
Matt Bronze	31115

## Round Flush Pull (Pair)

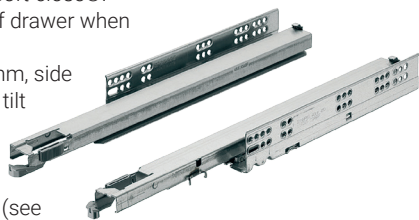
- Size: 57mm ø.
- Depth: 13mm.



Finish	Product Code
Antique Brass	31122
Polished Brass	31116
Polished Chrome	31117
Satin Chrome	31118
Satin Nickel	31119
Matt Bronze	31123

## Concealed Dynapro Drawer Runners 40kg

- Slide-on mounting and 40 kg carrying capacity with integrated Soft-close®.
- Continuous self locking of drawer when pushed onto the drawer.
- Height adjustment +3.5 mm, side adjustment  $\pm 1.5$  mm and tilt adjustment +4mm.
- Zinc-plated steel.
- Order front and rear fixing clip sets separately (see below).



Sizes	Min. Inst. Depth	Product Code
250mm	253mm	83430
270mm	273mm	83431
300mm	303mm	83432
350mm	353mm	83433
400mm	403mm	83434
450mm	453mm	83435
500mm	503mm	83436
550mm	553mm	83437

## 3D Clips for Runners (Steel)

- Compatible with Dynapro runners.
- Height adjustment + 3.5mm.
- Tilt angle adjustment + 4.0mm.
- Side adjustment + 1.5mm (requires drawer to be removed and reinstalled).



## Product Code

83438

## 4D Clips for Runners (Plastic)

- Compatible with Dynapro runners.
- Height adjustment + 3.5mm.
- Tilt angle adjustment + 4.0mm.
- Side adjustment + 1.5mm.
- Depth adjustment + 3.5mm.



## Product Code

83429

## Touch to Open Set for Dynapro Runners 40/60kg

- Mechanical opening system.
- Simply press the front of the drawer to open.
- Touch to open device has three operating levels for different weight drawers.



## Product Code

83447

## 952mm Synchronisation Rod for Dynapro Tipmatic (To suit 120mm drawer)

- Mechanical opening system.
- Simply press the front of the drawer to open.
- For cutting to length (inside cabinet width - 216 mm).

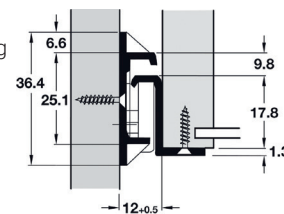


## Product Code

83448

## Bottom Fix Drawer Runner 35kg White

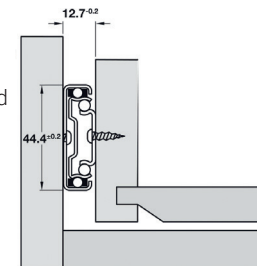
- Roller action, base mounting, self closing single extension drawer runners.
- 32mm drill pattern.
- Epoxy coated steel.
- Lateral adjustment of up to 2mm after installation.
- Sold as pairs without fixing screws.
- 250mm = 30kg.



Sizes	Product Code
300mm	83411
350mm	83412
400mm	83413
450mm	83414
500mm	83415
550mm	83416
600mm	83417

## Ball Bearing Full Extension Drawer Runner

- Hold in feature holds the drawer in.
- Zinc plated steel.
- Standard - 45kg & Soft Close - 35kg (load ratings vary).
- Other sizes are available.



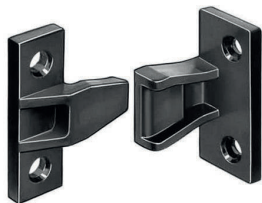
Size	Ext. Length	Standard	Soft Close
400mm	400mm	83439	83443
450mm	450mm	83440	83444
500mm	500mm	83441	83445
550mm	550mm	83442	83446





## Keku Push Fitting Set

- Secures trims & panels to walls.
- Once installed, can easily be removed.



### Product Code

30078

## Turnbutton - Black

- Screws not supplied.



### Size

50 x 12mm  
63 x 12mm

### Product Code

30144  
30143

## Adjustable Kitchen Feet & Leg Clip

- Sold as a set of four legs.
- For plinth heights 150mm.
- Plinth Leg Clip & Bracket (Screw fix).
- Made from black plastic.



### Type

Legs  
Leg Clips

### Product Code

30100  
30101

## Foot and Shaft Section

- For plug fitting into top section (right).
- Height Adjustable at the side and from top -10 to +18mm.
- Black plastic.
- Sold in quantities of 10.



### Height

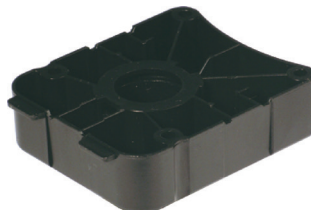
80mm  
100mm  
120mm  
150mm  
180mm  
200mm

### Product Code

M122.0001  
M122.0002  
M122.0003  
M122.0004  
M122.0005  
M122.0006

## Plinth Foot Top Section

- For screw fixing or press fixing.
- Black plastic.
- Sold in quantities of 10.



### Type

Screw Fixing

### Product Code

M122.0007

## Plinth Panel Clips

- For screw fixing on plinth panels.
- Black plastic.
- Sold in quantities of 20.



### Type

Screw Fixing

### Product Code

M122.0008

## AXILO 78 Foot and Shaft Section

- For plug fitting into top section (right).
- Height Adjustable at the side and from top -10 to +20mm using AXILO adjusting tool.
- Load bearing capacity 150kg per foot.
- Black plastic.
- Sold in quantities of 20.



### Height

60mm  
80mm  
100mm  
125mm  
150mm  
180mm

### Product Code

M122.0009  
M122.0010  
M122.0011  
M122.0012  
M122.0013  
M122.0014

## AXILO 78 Plinth Foot Top Section

- For screw fixing or press fitting.
- Black plastic.
- Sold in quantities of 20.



### Type

Screw Fixing  
Press Fixing

### Product Code

M122.0015  
M122.0016

## AXILO 78 Plinth Panel Clips

- For use from installation height 80mm.
- For screw fixing, press fitting, or side fitting on plinth panels.
- Black plastic.
- Sold in quantities of 100.



### Type

Screw Fixing  
Press Fitting  
Side on Fitting

### Product Code

M122.0017  
M122.0018  
M122.0019

## AXILO 78 Adjusting Tool

- Adjusting tool for use with AXILO 78 plinth fitting adjusting system.
- Provides ergonomic and time saving height adjustment on the plinth system.
- Height adjustment by rotating by hand or with electric tool.
- Chuck 1/4" bit supplied.



### Type

Adjusting Tool  
Extension

### Product Code

M122.0020  
M122.0021



# HAFELE

Full range of Hafele castors, feet, legs and table fittings available next day.

Please contact us with your enquiry.

## Magnetic Catch 6kg Pull

- Size: Catch: 46mm x 15mm x 14mm.



Finish	Product Code
E. Brass	30026
NP	30027
FB	30025
Black	30023

## Magnetic Catch

- Screws not supplied.
- Catch size: 46mm x 17mm.



Finish	Product Code
Black (4-5kg)	30020
White (3-4kg)	30021
Brown (3-4kg)	30022

## Flush Magnetic Catch

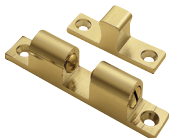
- Concealed from view.
- Provides a flush fit.
- Size: 2kg - 12mm $\varnothing$ , 4kg - 14mm $\varnothing$ .
- Quantities are shown in brackets.



Type	2kg	4kg
Screw Fix (5)	M122.0022	M122.0025
Push Fix North (10)	M122.0023	-----
Push Fix South (10)	M122.0024	-----

## Twin Ball Catch

- Solid for heavy-duty applications.
- Screws not supplied.



Size	Pol. Brass	Sat. Chrome
43 x 8mm	30033	30033/1
50 x 9mm	30034	30034/1
60 x 11mm	30035	30035/1
70 x 13.5mm	30036	30036/1

## Magnetic Pressure Catch - Black

- Screws not supplied.
- For glass doors.
- 1.8kg pull.
- Catch size: 41mm x 31mm.



Type	Product Code
Single Door	30029
Double Door	M122.0026

## Pressure Catch - Black

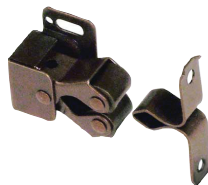
- Non-magnetic pressure catch.
- Plastic.
- 4kg pull.
- Catch size: 57mm x 40mm.
- Counterpiece size: 34mm x 16mm.



Product Code
30028

## Twin Nylon Roller Catch

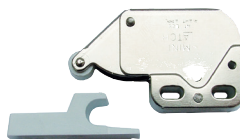
- Catch size: 32mm x 17mm.
- Counterpiece size: 38mm x 9mm.



Finish	Product Code
Bronze	30032
Zinc	30032/1

## Mini Spring Catch

- Catch size: 34mm x 27mm.
- Counterpiece size: 35mm x 11mm.



Product Code
30031

## Ball Catch

- Press-fit, brass plated steel catch.
- Solid chrome steel ball.



Catch $\varnothing$	Product Code
$\varnothing$ 8mm	M122.0027
$\varnothing$ 11mm	M122.0028

## Ball Catch

- Twist-fit, brass catch.
- Nailed striking plate.
- Solid chrome steel ball.
- Sold in singles unless stated in brackets.



Catch $\varnothing$	Product Code
$\varnothing$ 9mm	M122.0029
$\varnothing$ 12mm	M122.0030
$\varnothing$ 14mm (10)	M122.0031

## Clear Adhesive Buffers

- For use where extra cushioning is required.
- 12.7 x 3.5mm.
- Sold In 20's.



Product Code
17433

## K Push Closing

- Can be both morticed and surface mounted.
- Available either with magnet or buffer.



Finish	With Buffer	With Magnet
Grey	M122.0032	M122.0035
White	M122.0033	M122.0036
Anthracite	M122.0034	M122.0037

- Order surface mount fitting separately for surface mounting.



Finish	Surface Mount
Grey	M122.0038
White	M122.0039
Anthracite	M122.0040

- Order magnet fitting separately for K Push with magnet.



Type	Product Code
Adhesive Plate for Magnet	M122.0041
Screw on Plate for Magnet	M122.0042

## From The Anvil Cabinet Turn

- Fixing Plates: 56mm x 20mm.
- Projection: 40mm.



Finish	Product Code
Black	33115
Pewter	33684
Beeswax	33859

## From The Anvil Cabinet Latch

- Overall Size: 55 x 41mm.
- Keep Size: 55 x 15mm.
- Projection: 37mm.
- Throw: 9mm.



Finish	Product Code
Black	46129
Pewter	46131
Beeswax	46130
Polished Brass	46051
Aged Brass	46046
Polished Chrome	46048
Satin Chrome	46052
Polished Nickel	46047
Aged Bronze	46049
Polished Bronze	46050



## Cupboard Lock - BZP

- Zinc alloy case and cylinder.
- Comes with 2 keys.
- Size: Cylinder: 18mm Ø
- Backset: 26 mm



Style	Product Code
Left Handed	18328
Right Handed	18329

## 95° Grass Tiomos Soft Close Kitchen Hinge

- For doors up to 28mm.
- Screw fixing, 35mm cup.
- Click on arms.
- Mounting plates below.



Type	Product Code
Full Overlay	M122.0043
Inset	M122.0044

## 110° Metalla Soft Close Kitchen Hinge (Pair)

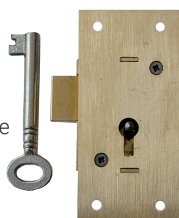
- For 14-26mm thick doors.
- Screw fixing, 35mm Ø cup.
- Quick fixing arms.
- Comes with 0mm mounting plates and cover caps for hinge arm.



Type	Product Code
Full Overlay	16660
Inset	16660/1

## Cupboard Lock - Brass

- Backset Sizes:  
18340: 15mm.  
18341: 18mm.  
18342: 18mm.
- This 2 lever lock is to be surface fixed to the inside of cupboard doors.



Size	KD	KA
50mm x 29mm	18340	18340/1
63mm x 37mm	18341	18341/1
76mm x 37mm	18342	18342/3

## Two Part Plate with +2mm Height Adj

- Mounting plates for the above.



Height	Product Code
0mm	M112.0045
2mm	M112.0046

## 110° Grass Tiomos Soft Close Kitchen Hinge (Pair)

- For door thickness up to 24 mm.
- Screw fixing, 35mm cup.
- Comes with 0mm mounting plates, cover caps for hinge arms and hinge cups.



Type	Product Code
Full Overlay	16661
Inset	16662

## Strike Plate - Brass

- Plated Flat Strike Plate - Brass.
- For recess mounting.
- Size: (Flat) 55mm x 12mm.
- Plated Angled Strike Plate - Brass.
- Size: (Angled) 33mm x 9mm.



Type	Product Code
Flat	18342/1
Angled	18342/2

## 110° Standard Kitchen Hinge

- Standard adjustment.
- For doors up to 22mm.
- Click on arm.
- Comes with 0mm mounting plates and cover caps for hinge arms.
- Sold in pairs.



Type	Product Code
Full Overlay	16655
Inset	16655/1

## 177° Slide-on Kitchen Hinge

- For doors 20-26mm.
- Screw fixing, 35mm cup.
- Comes with 4mm mounting plates.
- Sold in pairs.



Product Code
16658

## 90° Easy Mount Sprung Kitchen Hinge (Pair)

- For door thickness minimum 16mm.
- For side panels 16-22mm.
- Screw fixing.



Product Code
16659

## Add on Soft Close

- For hinges 16655 & 16655/1.



Product Code
83420

## Soft Close Mechanism/Housing

- Grey plastic.
- For heavy duty doors more than 6kg.
- Plug fitting into a ø 10mm hole or use housing.
- Mechanism - 52 x ø 10mm.



Type	Product Code
Mechanism	16664
Housing	16665

## Flat Bookcase Strip

- Size: 1.83m x 19mm.
- 16 x 3mm Screws required.
- Slot CC: 19mm.
- Fixing CC: 114mm.



Finish	Product Code
Solid Brass	17300
Electro Brassed	17303
Zinc	17304
Brown	17302
Bronze Aluminium	17314
Satin Nickel	17323
Black	17316

## Flat Bookcase Studs

- To be used in conjunction with Flat Bookcase Strips.
- Size: 21 x 19mm.



Finish	Product Code
Solid Brass	17301
Electro Brassed	17422
Zinc	17423
Bronze	17421
Satin Nickel	17324
Black	17317/1

## Flat Heavy Duty Studs

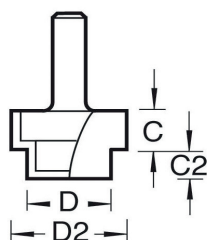
- To be used in conjunction with Flat Bookcase Strips.
- Size: Width: 19mm
- Length: 27mm



Finish	Product Code
Electro Brassed	17430
Zinc	17429
Bronze	17431
Satin Nickel	17325
Black	17318

## C231 Flat Bookcase Strip Cutter

- D: 9.5mm.
- D2: 19mm.
- C: 13mm.
- C2: 6mm.
- Designed to accept bookcase strip.

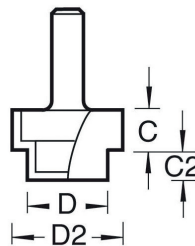


**C** Trend Craft Range

Shank Diameter	Product Code
1/4"	26864
1/2"	26865

## 36 Flat Bookcase Strip Cutter

- D: 9.5mm.
- D2: 19mm.
- C: 13mm.
- C2: 6mm.



**P** Professional Range

Shank Diameter	Product Code
1/4"	26632
1/2"	26632/1

## Raised Bookcase Strip 1.83m

- Size: 1.83m x 24mm.
- 12 x 3mm screws required to fix strip.
- Slot CC: 12.7mm.
- Fixing CC: 152mm



Finish	Product Code
Electro Brassed	17307
Zinc	17305
Brown	17306
Bronze Aluminium	17315
Black	17320

## Raised Bookcase Studs

- To be used in conjunction with Raised Bookcase Strips.
- Size: 20mm x 20mm.



Finish	Product Code
Electro Brassed	17426
Zinc	17425
Bronze	17424
Black	17321/1

## Raised Heavy Duty Studs

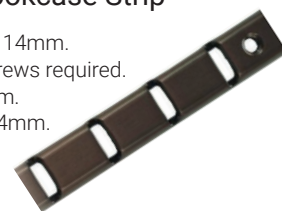
- To be used in conjunction with Raised Bookcase Strips.
- Size: 22mm x 22mm.



Finish	Product Code
Electro Brassed	17426/H
Zinc	17425/H
Bronze	17424/H
Black	17322

## 'U' Section Bookcase Strip

- Size: 1.83m x 14mm.
- 16 x 3mm screws required.
- Slot CC: 19mm.
- Fixing CC: 114mm.



Finish	Product Code
Electro Brassed	17308
Zinc	17309
Brown	17310

## 'U' Section Double Stud

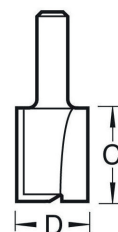
- To be used in conjunction with Raised Bookcase Strips.
- Size: Thickness: 1.6mm x 2mm.
- Width: 14mm.



Finish	Product Code
Electro Brassed	17311
Zinc	17312
Bronze	17313

## U-Section Bookcase Strip Cutter

- Model - C023AX1/4TC
- D: 14mm.
- C: 19mm.
- Use on softwoods, hardwoods, MDF, plywood and chipboard.



**C** Trend Craft Range

Product Code
26277

## Mushroom Buffers For Glass Shelves

- Size: 12 x 4mm.



Product Code
17432

## Clear Adhesive Buffers For Glass Shelves

- 12.7 x 3.5mm.
- Sold In 20's.



Product Code
17433

## Shelf Support Solid Brass

- Manufactured from solid brass.
- Corresponding sleeve: (Product code: 17453).
- Shaft Size: 6mm x 7mm.
- Support Plate: 8mm x 12.5mm.

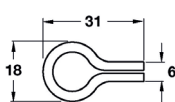


### Product Code

17452 ●

## Loop Shelf Support for Socket

- Press fit into Shelf Sleeve (17454).



### Finish

Electro Brassed  
Nickel Plated  
Bronze

### Product Code

17455  
17455/1  
17455/2 ●

## Concealed Shelf Support - Steel Galvanised

- For installation into woodwork or masonry walls with screw mounting plate.
- For 24mm shelf thickness.
- Pin: 12mm Diameter x 112mm.
- Fixing Plate: 68mm x 20mm.



### Product Code

17505

## Shelf Sleeve Solid Brass

- Manufactured from solid brass.
- Corresponding stud: (Product code: 17452).
- Diameter: 8mm.
- Height: 8mm.

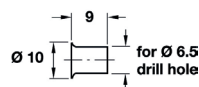


### Product Code

17453 ●

## Shelf Support Socket

- Use in conjunction with plug in loop shelf support.
- For 6.5mm ø hole.



### Finish

Electro Brassed  
Nickel Plated  
Bronze

### Product Code

17454  
17454/1 ●  
17454/2

## From The Anvil Plain Shelf Bracket

- Sold in singles.
- Vertical Plate: 152mm.
- Projection: 152mm.



### Finish

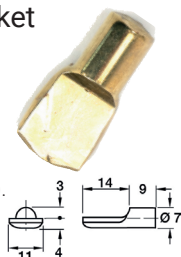
Black  
Natural Smooth  
Beeswax

### Product Code

83780  
45420  
83781

## Shelf Support for Socket

- Spoon shaped.
- Max load up to 100 kg (4 shelf supports).
- For 7mm ø hole or press fitting into socket (below).



### Finish

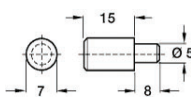
Brass Plated  
Nickel Plated

### Product Code

17450  
17450/1 ●

## Plug In Shelf Support

- 80kg load capacity (4 supports).
- For 5mm ø hole.



### Finish

EB  
NP

### Product Code

17456  
17457

## From The Anvil Curved Shelf Bracket

- Sold in singles.
- Vertical Plate: 174mm
- Projection: 249mm



### Finish

Black  
Natural Smooth

### Product Code

83784  
45421

## Shelf Support Socket

- Use in conjunction with Shelf Support (17450 or 17450/1).
- For 7.5mm ø hole.



### Finish

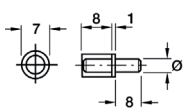
Brass Plated  
Nickel Plated

### Product Code

17451  
17451/1 ●

## Plug In Glass Shelf Support

- Steel with transparent plastic cap.
- 80kg load capacity.



### Hole ø

3mm  
5mm

### Product Code

17458  
17459

## From The Anvil Flower Shelf Bracket

- Sold in singles.
- Vertical Plate: 230mm
- Projection: 237mm



### Finish

Black  
Beeswax

### Product Code

83788  
83789

## Tools for 7.5mmø Sleeves

- To go with products 17451 & 17451/1.



### Finish

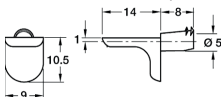
Drill Bit  
Punch Tool

### Product Code

17480  
17481

## Plug In Shelf Support (100)

- With twin grooves.
- For 5mm ø hole.
- Load carrying capacity 125kg.
- Sold in multiples or 100.



### Product Code

17479





## Oval Wardrobe Rail

- Size: 15mm x 30mm.
- Brass Plated Wall thickness: 0.7mm.
- Pol. Chrome Wall Thickness: 0.6mm.



Size	Finish	Product Code
1.5m	Brass Plated	17440
3m	Brass Plated	17441
1.5m	Pol. Chrome	17447
3m	Pol. Chrome	17444

## Round Wardrobe Rail

- Size:  
Length - 2438mm.  
Diameter - 25mm ø.
- Wall thickness: 0.5mm.



Finish	Product Code
Matt Black	17463
Antique Copper	17466
Antique Brass	17469

## Round Wardrobe Rail End Socket - Polished Chrome

- Size:  
Width - 50.5mm ø.  
Projection - 15mm.



Product Code
17477

## Oval Rail Centre Bracket

- Width: 46mm.
- Projection: 75mm.



Finish	Product Code
Brass Plated	17442
Polished Chrome	17446

## Round Wardrobe Rail Centre Bracket

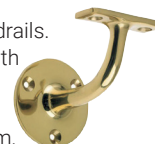
- Size:  
Width - 47mm.  
Projection - 89mm.



Finish	Product Code
Matt Black	17464
Antique Copper	17467
Antique Brass	17470

## Handrail Bracket

- Suitable for flat based handrails.
- Face fixing and supplied with screws.
- Rose: 55mm.
- Fixing Plate: 53mm x 20mm.
- Projection: 80mm.



Finish	Product Code
PB	23560
PC	23561
SC	23562

## Oval Rail End Socket

- Size: Width: 19mm.
- Projection: 44mm.



Finish	Product Code
Brass Plated	17443
Polished Chrome	17445

## Round Wardrobe Rail End Socket

- Size:  
Width - 52mm.  
Projection - 25mm.



Finish	Product Code
Matt Black	17465
Antique Copper	17468
Antique Brass	17471

## From The Anvil Handrail Bracket

- Sold in singles.
- Size: Wall Plate: 48mm x 38mm.
- Rail Plate: 55mm x 22mm.



Finish	2"	2.5"	3"
Black	83840	83841	83842
Pewter	46141	46142	46143
Beeswax	46138	46139	46140

## Oval Rail End Bracket

- Width: 46mm.
- Projection: 75mm.



Finish	Product Code
Polished Chrome	17438

## Round Wardrobe Rail - Polished Chrome

- Size:  
Length - 3000mm.  
Diameter - 25mm ø.
- Wall thickness: 0.7mm.



Product Code
17475

## 2.5" Handrail Bracket White

- Face fixing and supplied without screws.
- Rose: 60mm.
- Fixing Plate: 61mm x 24mm.



Product Code
23566

## Oval Rail End Socket (Top Fix)

- Width: 46mm.
- Projection: 75mm.



Finish	Product Code
Brass Plated	17448
Polished Chrome	17449

## Round Wardrobe Rail Centre Bracket - Polished Chrome

- Size:  
Width - 47mm.  
Projection - 89mm



Product Code
17476

