



FANTOM DOORSTOP CLAMSHELL

DESCRIPTION

The Premium Fantom comes with over mould pins (OMPIN) which are colour matched to the floor sleeve colour as selected. Included is the premium stainless steel striker plate (no lip).

The premium striker plate has the stopping mechanism built into the dimple, allowing for door-floor gaps ranging from 3-10mm. Gaps greater than 10mm will require a Fantom Packer.

SKUs

CLAM-CLEAR-OM / CLAM-BLACK-OM / CLAM-WHITE-OM /
CLAM-CHROME-OM / CLAM-BRUSHED-OM / CLAM-BRASS-OM /
TRADE-CLEAR-OM / TRADE-BLACK-OM / TRADE-WHITE-OM /
TRADE-CHROME-OM / TRADE-BRUSHED-OM /
TRADE-BRASS-OM / CLAM-CLEAR-NYLON /
CLAM-BRUSHED-NYLON / CLAM-CHROME-NYLON /
TRADE-CLEAR-NYLON / TRADE-BRUSHED-NYLON /
TRADE-CHROME-NYLON

SIZE

65mm (L) x 100mm (W) x 160mm (H), weight: 170gm

FANTOM DOORSTOP TRADE PACK

DESCRIPTION

The Premium Fantom comes with over mould pins (OMPIN) which are colour matched to the floor sleeve colour as selected. Included is the premium stainless steel striker plate (no lip).

The premium striker plate has the stopping mechanism built into the dimple, allowing for door-floor gaps ranging from 3-10mm. Gaps greater than 10mm will require a Fantom Packer.

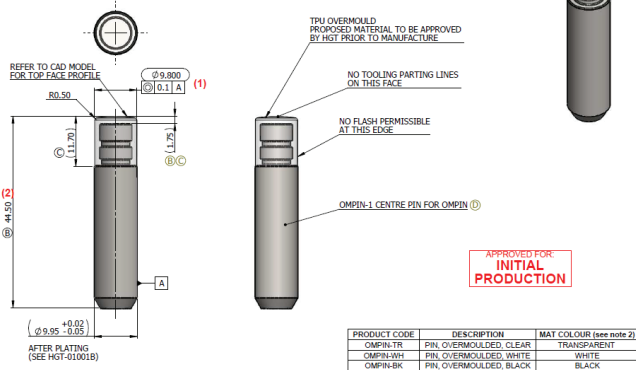
SKUs

CLAM-CLEAR-OM / CLAM-BLACK-OM / CLAM-WHITE-OM /
CLAM-CHROME-OM / CLAM-BRUSHED-OM / CLAM-BRASS-OM /
TRADE-CLEAR-OM / TRADE-BLACK-OM / TRADE-WHITE-OM /
TRADE-CHROME-OM / TRADE-BRUSHED-OM /
TRADE-BRASS-OM / CLAM-CLEAR-NYLON /
CLAM-BRUSHED-NYLON / CLAM-CHROME-NYLON /
TRADE-CLEAR-NYLON / TRADE-BRUSHED-NYLON /
TRADE-CHROME-NYLON

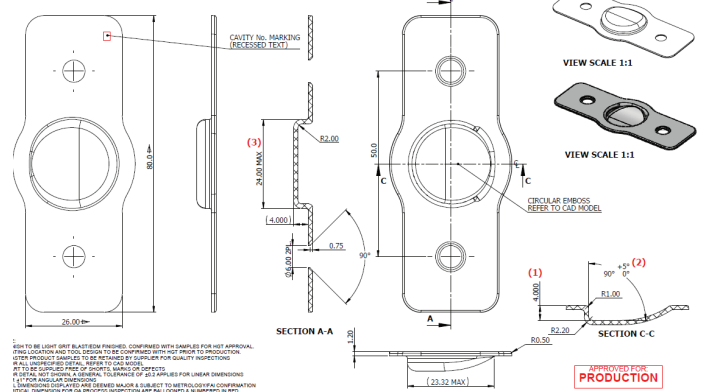
SIZE

85mm (L) x 85mm (W) x 70mm (H), weight: 130gm

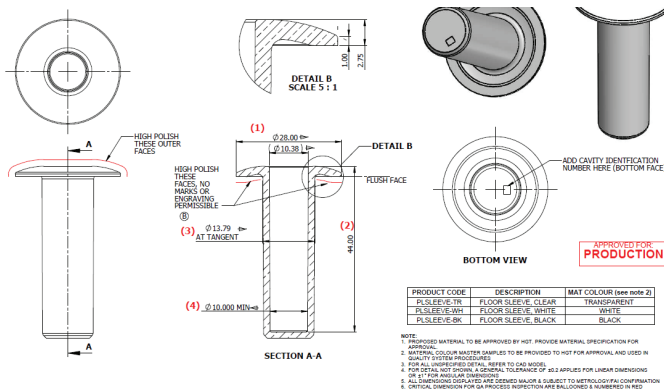
OMPIN



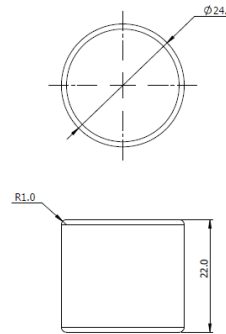
NYLON STRIKER



FLOOR SLEEVE



MAGNET



STAINLESS STRIKER

