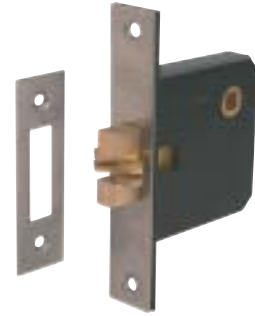
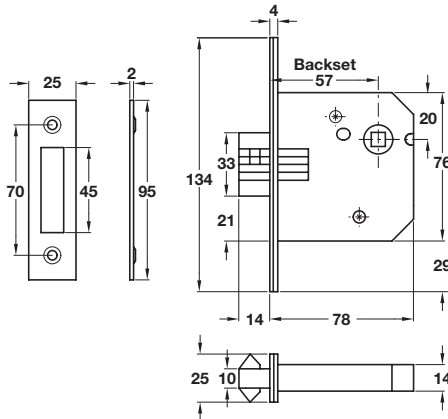


A Mortice bathroom sliding door lock

- **Operation:** Claw bolt by turn
- **Case:** Epoxy powder coated steel
- **Forend:** Square, 2 piece, stainless steel or brass
- **Strike plate:** Square, flat, included
- **Clawbolt:** Brass, 14 mm throw, operated by thumbturn or flush ring handle from either side
- Flush ring handle for use with 8 mm follower version only - see below, item E
- **Follower:** 5 and 8 mm
- Fixing screws included

Finish	5 mm follower	8 mm follower
Stainless steel	911.26.159	911.26.161
Polished brass	911.26.160	911.26.162

Packing: 1 pc



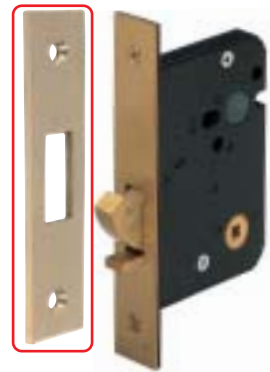
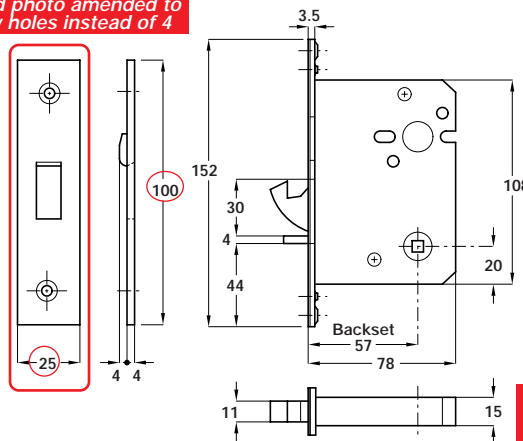
Item B.
Illustration and photo amended to show 2 screw holes instead of 4

B Snib operated hookbolt lock

- For internal straight sliding doors, including sliding toilet doors for the disabled
- Backset: 57 mm
- Brass follower to suit 5 mm spindle
- **Hookbolt:** Brass - operated by thumbturn from either side
- **Case:** Black powder coated steel
- **Outer forend:** Satin brass or stainless steel
- **Accessories:**
1x **Striking plate:** Brass or stainless steel
- Fixing screws included

Finish of forend/striking plate	Cat. No.
Stainless steel	911.26.061
Satin brass	911.26.062

Packing: 1 pc



Item B.
Catalogue shows 140 mm and 33 mm
Correct dimensions are 100 mm and 25 mm

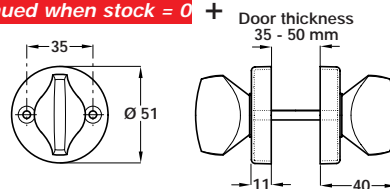
C Double-sided snib thumbturn

- For use with locks A and B above
- 5 mm spindle included for 35-50 mm door thickness
- Fixing screws supplied
- Anodised aluminium

Finish	Cat. No.
Polished aluminium	● 911.03.309

Packing: 1 set

Discontinued
Discontinued when stock = 0

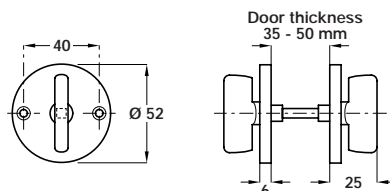


D Double-sided snib thumbturn

- For use with locks A and B above
- 5 mm spindle included for 35-50 mm door thickness
- Fixing screws included
- Brass

Finish	Cat. No.
Polished brass	911.03.308
Satin nickel plated	911.03.307

Packing: 1 set

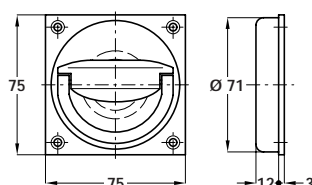


E Flush ring pull handle, 75 x 75 mm

- For maximum 50 mm door thickness
- 8 mm spindle included to operate mortice latch
- Fixing screws included
- Brass

Finish	Cat. No.
Satin nickel plated	910.37.008
Polished brass	910.37.017

Packing: 1 pc



Dimensions in mm

We reserve the right to alter specifications without notice.